



HelioCampus Assessment - Stockton University

August 18, 2022

Agenda

- **Introductions**
- **Review Priorities and Challenges at Stockton University**
- **HelioCampus Overview**
- **HelioCampus Assessment Offerings**
- **Demo**
- **Q & A**

Participants



- **Greg Leonard** - Director of Sales
- **Suzanne Carbonaro** - Director of Academic Partnerships

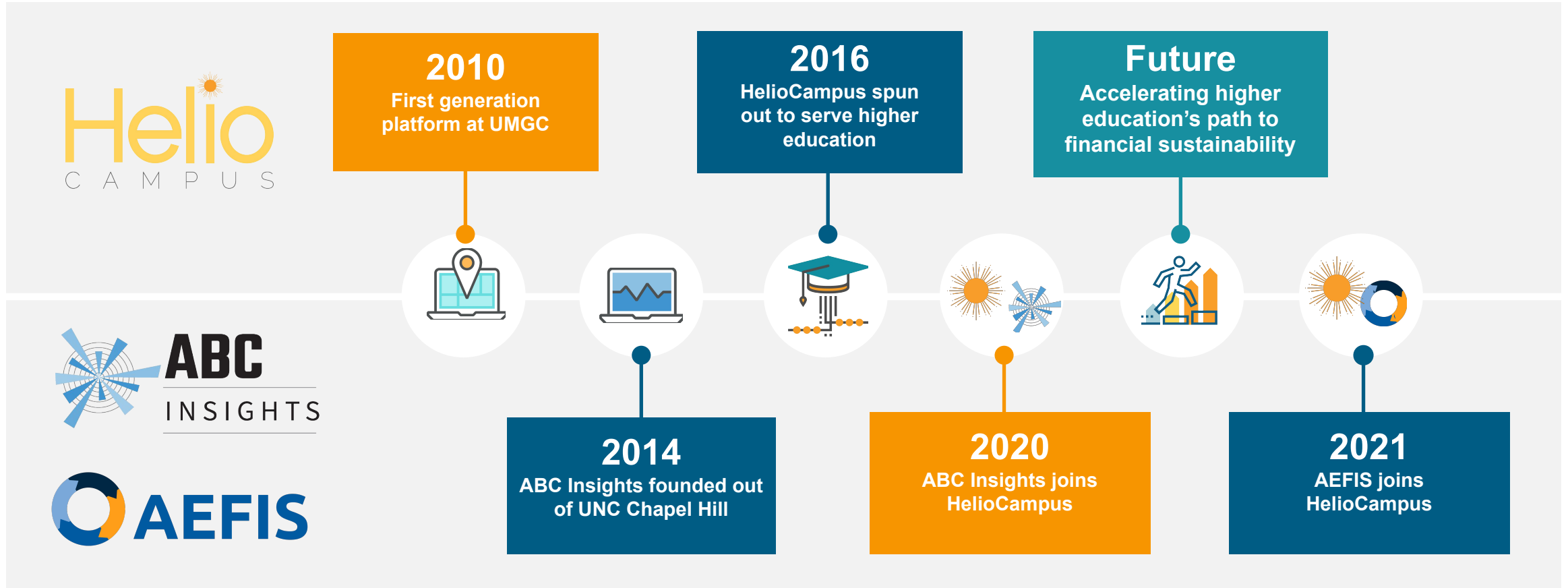
Participants



- Alaina Walton - Director of Academic Assessment
- Peter Baratta - Chief Officer for Strategic Planning & Effectiveness
- Stacey Culleney - Instructor, School of Education
- Jess O'Shaughnessy - Associate Provost
- Norma Boakes - Chair, Education
- Renee Cavezza - Accreditation Specialist, School of Health Sciences
- Scott Huston - Chief Information Officer
- Donna Hauer - Accreditation Specialist, School of Business
- Jessica Kay - Director, Institutional Research
- Claudine Keenan - Dean, School of Education
- Ariane Newman - Associate Provost for Academic Success
- Alex Marino - Director of Academic Operations, Atlantic City
- AmyBeth Glass - Associate Provost for Academic Affairs
- Kelly Oquist, Director - Academic Finance
- Walead Abdrabough - Director, Information Systems & Business Intelligence
- Joe Sramaty - Manager, Academic Personnel & Administration
- Nicole Suprun - Executive Assistant to Chief Planning Officer
- Patricia Thatcher - Interim Associate Provost, Library & Learning Commons
- Sheila Quinn - Associate Dean for Nursing

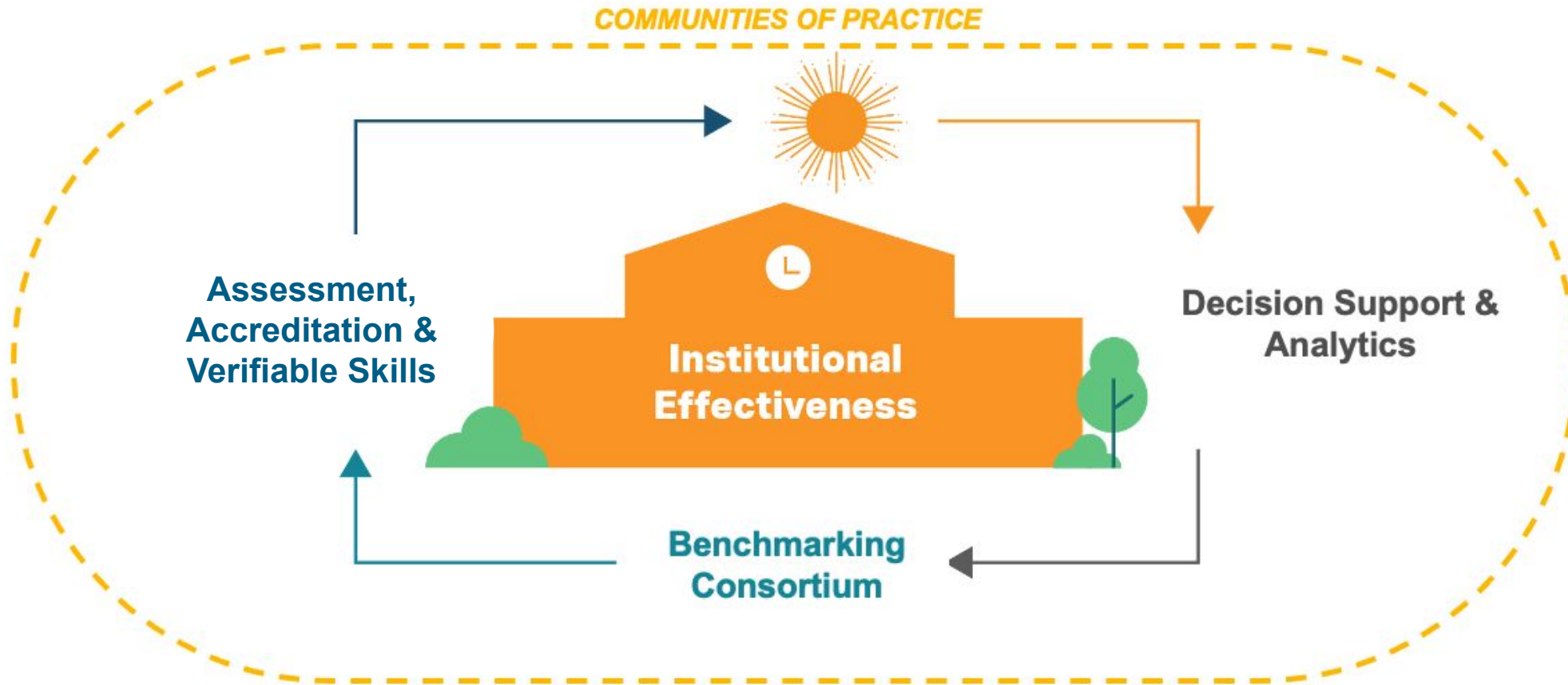
Our Roots: Innovation from Within Higher Ed

Born out of the University System of Maryland, HelioCampus is purpose-built to serve the unique needs of higher education.



Formula for Institutional Effectiveness 2.0

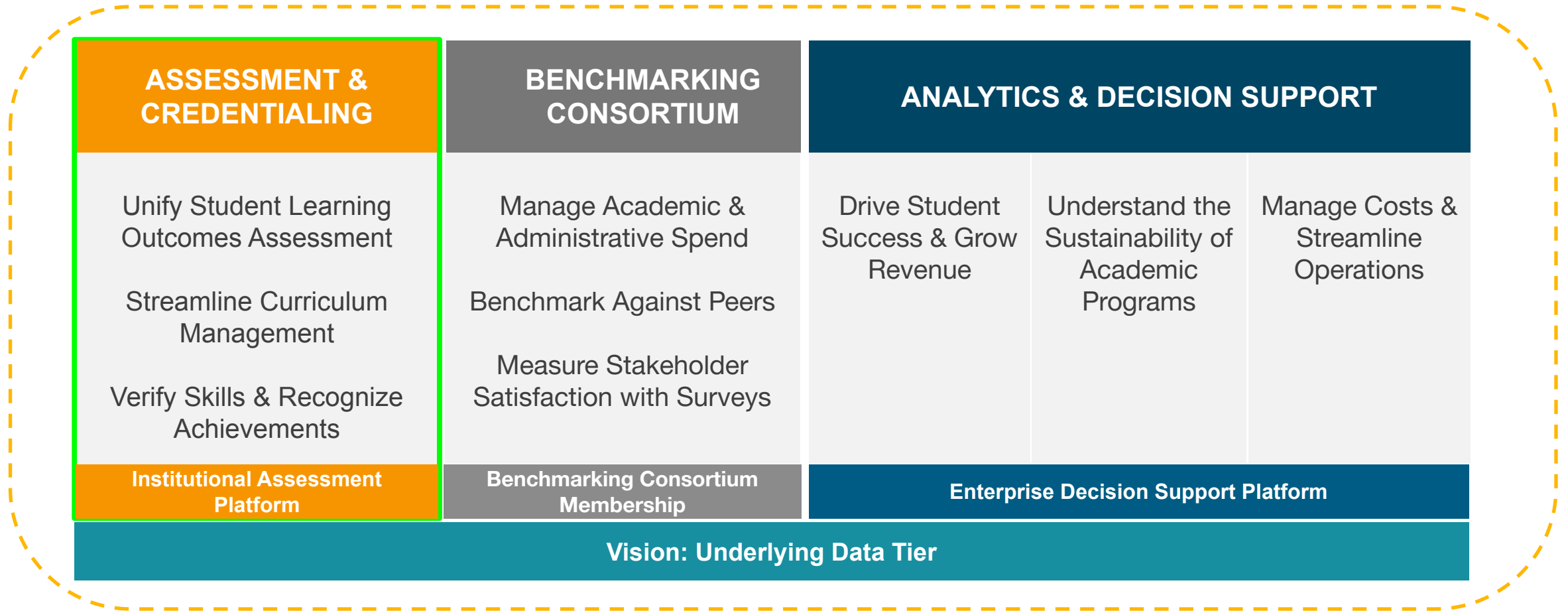
HelioCampus empowers institutional effectiveness, helping colleges and universities better align investments with both financial and student learning outcomes.



HelioCampus Portfolio

Three complementary solution areas help colleges and universities usher in a new era of institutional effectiveness.

COMMUNITIES OF PRACTICE

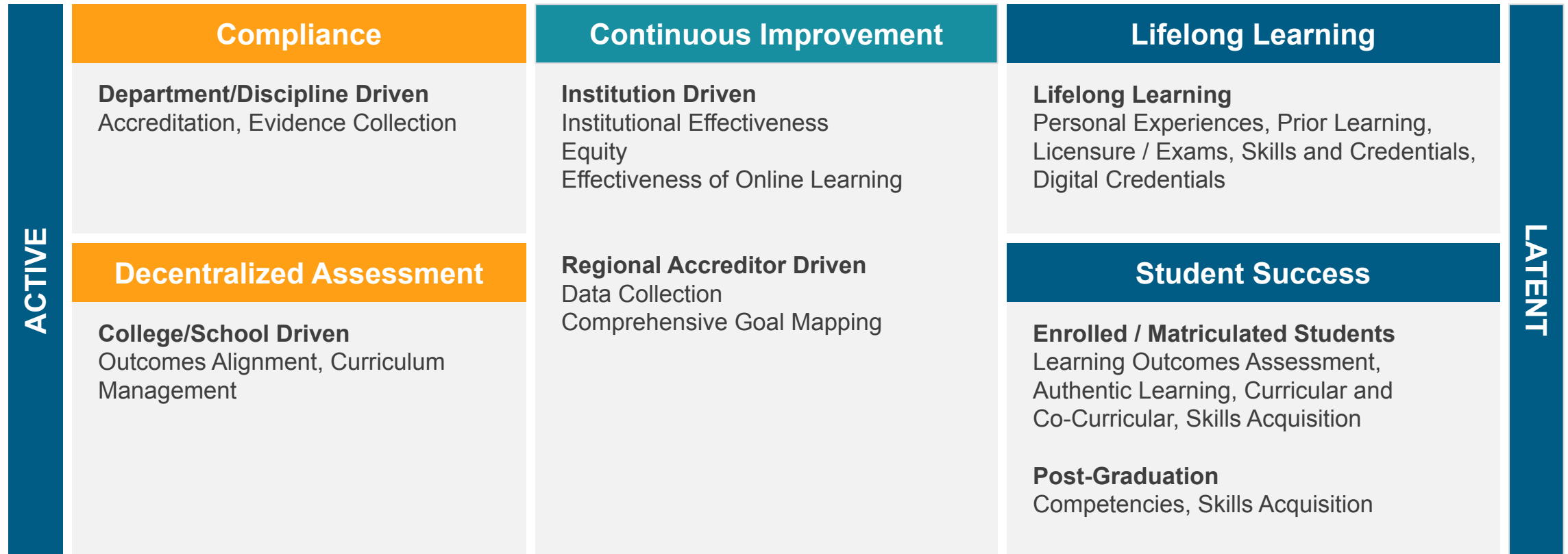


HelioCampus Assessment Offerings



Assessment Needs In Transition & Evolving

While active drivers create demand for traditional assessment management platforms, “Assessment 2.0” capabilities are emerging.



← Expanding role of Assessment as a Campus-Wide Initiative →

Diverse Partner Base Across Segments

AEFIS partners with institutions of higher education, predominantly 4-year non-profits.

Public, 4-year,
non-profit



UNIVERSITY OF MARYLAND
GLOBAL CAMPUS



FORT HAYS STATE
UNIVERSITY



Private, 4-year,
non-profit



Northeastern
University

Public, 2-year,
non-profit



Community
College
of Philadelphia



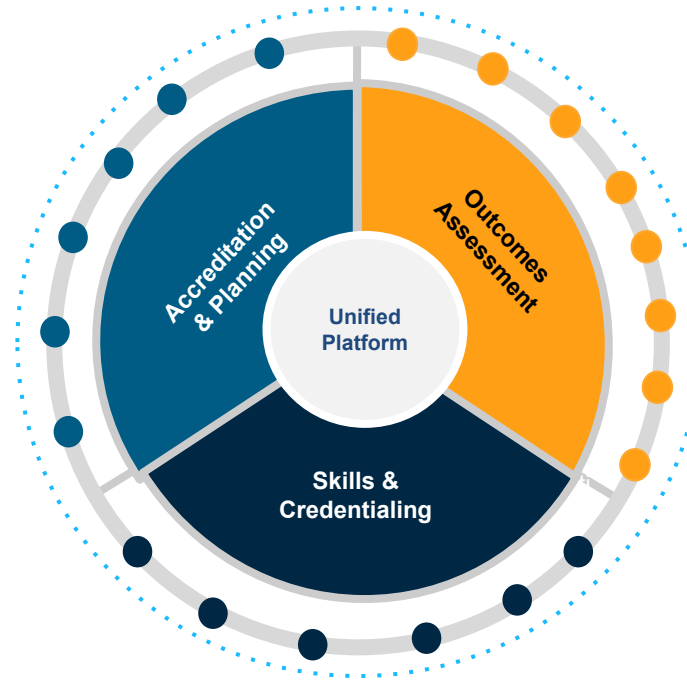
Platform Capabilities - A Unified Platform for Institutional Effectiveness

Accreditation & Planning

- Self Study
- Program Review
- Data Collection & Workflows
- SIS Integration
- Strategic Planning

Additional Capabilities (Add On):

- Course Evaluations
- Faculty Activity & CV



Outcomes Assessment

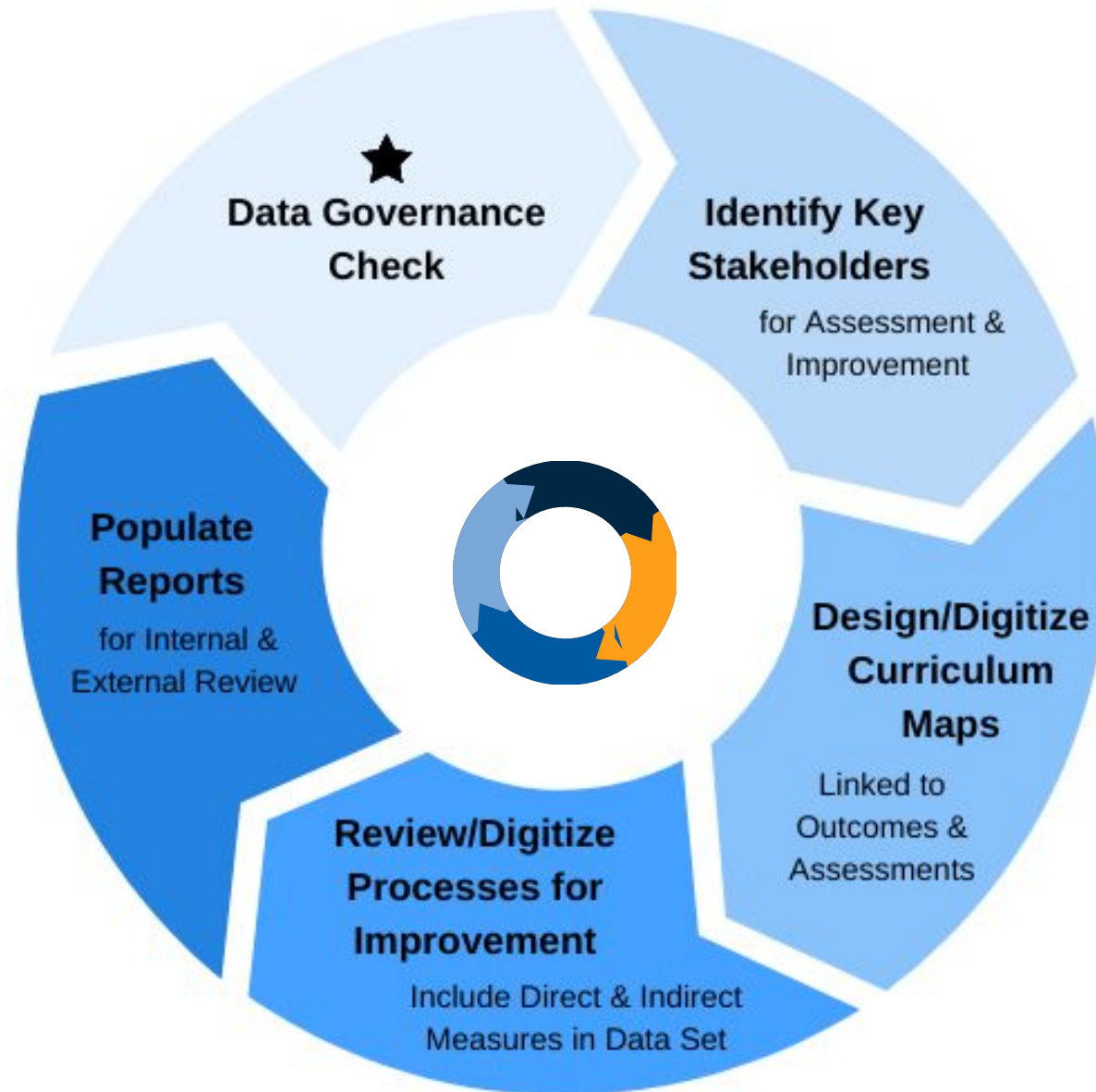
- Curriculum Mapping
- Outcomes Assessment
- LMS Integration
- Syllabus Management
- Juried Assessment
- Co-Curricular Assessment

Outcomes Transcript +
Competency Portfolio
(CLR)

Badging

Skills & Credentialing

AEFIS Core Platform Foundation for Success



Strengths of the HelioCampus Assessment Platform



**Feature-rich platform
capable to support
various assessment
strategies**



**Supports short and
long-term growth into
the platform**



**Data collection
across a flexible
all-in-one solution**



**Highly customizable
workflows digitizes
improvement
processes**



**Real-time insight into
learning performance**



**Support of open
standards tech
ecosystem compatibility**



**LMS integrations
reduce significant
instructional effort**



**Innovation on
existing capabilities**

Campus Systems Integration



AEFIS — Reporting and Analytics Framework



Assessment
Management Platform

- In-Line Reporting
- Canned Reporting
- Visual Dashboard Reporting
- Ad-Hoc Reporting
- UI Based Export Tools
- AEFIS API
- AEFIS DW Interface



Tableau
PowerBI

AEFIS Walkthrough



AEFIS Onboarding Overview



Introducing Your Communities of Practice



Learn, Teach, Collaborate, Innovate.
www.aefisacademy.org



A woman with glasses, wearing a dark sleeveless top, stands at the front of a meeting room, gesturing with her hands as if presenting. She is holding a small device in her right hand. In the foreground, several people are seated at desks, looking towards her. One man on the left is looking at a laptop. Another man in the background is leaning on a desk with his hand to his chin. The room has a stone wall and a whiteboard with a diagram on it. The entire image is overlaid with a semi-transparent orange filter.

Questions?

Thank you

HelioCAMPUS

