

# Welcome New Faculty

2018-2019



New Jersey's Distinctive Public University

# School of Arts & Humanities

## Dean

Lisa Honaker

## Assistant Dean

Rosa Perez-Maldonado

[stockton.edu/arhu](http://stockton.edu/arhu)



## Nesrine Chahine

Visiting Assistant Professor of Literature

### Degrees

PhD, The University of Pennsylvania, Philadelphia, PA  
MA, Pennsylvania State University, State College, PA  
BA, The American University of Beirut, Beirut, Lebanon

### Teaching Focus

Writing, postcolonial studies, global Anglophone literature, world literature

### Research Focus

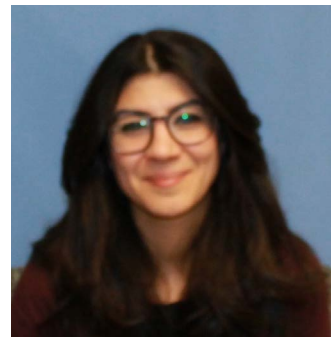
Twentieth-century Anglo-Egyptian literatures in the context of postcolonial and globalization theory

### Recent Scholarship/Creative Work

Chahine, Nesrine. Review of *Standing by the Ruins: Elegiac Humanism in Wartime and Postwar Lebanon*, by Ken Seigneurie.

*Comparative Literature Studies* 50, no.4 (2013): 21-25. doi: 10.5325/complitstudies.50.4.e-21.

Chahine, Nesrine, trans. Selections from *Miṣra' Kliyūbātrā (The Death of Cleopatra)*, by Ahmad Shawqī. In *Antony and Cleopatra*, by William Shakespeare, edited by Ania Loomba, 350-353. New York: Norton Critical Edition, 2011.



## Aaron Moss

Assistant Professor of Theater, Directing

### Degrees

MFA, Acting, Yale University, New Haven, CT  
BA, Theatre/Acting, University of Maryland, Baltimore County, MD

### Teaching Focus

Acting, directing, performance theory, dramatic theory, television and film

### Research Focus

Acting/directing for stage and screen

### Recent Scholarship/Creative Work

Moss, Aaron, perf. *The First Purge*. Dir. Gerard McMurray. Perf. Y'lan Noel, Lex Scott Davis, Jovian Wade. Universal Pictures, 2018.

*The Christians*. By Lucas Hnath, directed by Scott Behrend, performances by Aaron Moss (as Associate Pastor), Dave Hayes, and Lisa Vitrano, Road Less Travelled Productions, April 19-May 20, 2018, Buffalo, NY. Award: *Artie Award nominations for Outstanding Supporting Actor in a Drama and Outstanding Production of a Play*



## Toby Rosenthal

Visiting Instructor of Communication Studies

### Degrees

MS, Columbia University, New York, NY  
BA, University of Maryland, College Park, MD

### Teaching Focus

Digital storytelling, broadcast journalism, video production, reality TV

### Research Focus

The evolution of multi-platform, and multi-genre, non-fiction digital storytelling including reality-docu style television and journalism.

### Recent Scholarship/Creative Work

Rosenthal, Toby. *Reflections and Remembrance: Helen Kejzman*. 2018. Produced and edited a short form life story video of Holocaust survivor Helen Kejzman for Cumberland County College. This video also aired on The Stockton Channel during the week of Yom Hashoah in April 2018.

*Restaurant: Impossible*. Food Network. Story Producer, 2011-2016.



## Brooke Stanley

Visiting Assistant Professor of Literature

### Degrees

PhD, University of Pennsylvania, Philadelphia, PA  
MA, University of Pennsylvania, Philadelphia, PA  
BA, Kenyon College, Gambier, OH

### Teaching Focus

Global Anglophone literature

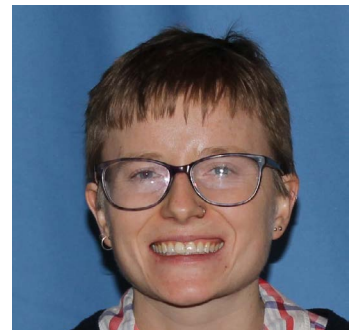
### Research Focus

Postcolonial studies, ecocriticism and environmental humanities, South African and South Asian literatures, food studies, global modernism, gender and sexuality

### Recent Scholarship/Creative Work

"Paddy, Mangoes, and Molasses Scum: Food Regimes and the Modernist Novel in *The Tale of Hansuli Turn*." *Modernism and Food Studies*, edited by Jessica Martell, Adam Fajardo, and Philip Keel Geheber, University Press of Florida, forthcoming in January 2019.

"South African Ecocriticism: Landscapes, Animals, and Environmental Justice." With Walter Dana Phillips. *The Oxford Handbook of Ecocriticism Online*, edited by Greg Garrard, Oxford UP, 2017



# School of Business

## Dean

Janet Wagner

## Assistant Dean

Esther Lawrence

[stockton.edu/busn](http://stockton.edu/busn)



## Sujoy Chakraborty

**Instructor, Computer Science**

### Degrees

PhD, (In progress) Electrical & Computer Engineering, Binghamton University, State University of New York, Binghamton, NY

ME in Software Engineering, Jadavpur University, Kolkata, India

B.Tech in Electronics & Communication Engineering, Institute of Engineering & Management, Kolkata, India

### Teaching Focus

Estimation theory, information theory, machine pattern recognition, fundamentals of steganography, cryptography and information security, data compression, signal transforms, and detection theory

### Recent Scholarship/Creative Work

Sujoy Chakraborty and Matthias Kirchner. PRNU-based Image Manipulation Localization with Discriminative Random Fields, in A.M. Alattar and N.D. Memon (eds.): Media Watermarking, Security, and Forensics 2017, Proceedings of IS&T Electronic Imaging, 2017.

[http://ws.binghamton.edu/kirchner/papers/2017\\_EI\\_DRF.pdf](http://ws.binghamton.edu/kirchner/papers/2017_EI_DRF.pdf)

Sujoy Chakraborty and Matthias Kirchner. Compression Forensics Beyond the First Significant Digit, in A.M. Alattar and N.D. Memon (eds.): Media Watermarking, Security, and Forensics 2016, Proceedings of IS&T Electronic Imaging, 2016. [http://ws.binghamton.edu/kirchner/papers/2016\\_EI\\_SSD.pdf](http://ws.binghamton.edu/kirchner/papers/2016_EI_SSD.pdf)



## Noel Criscione-Naylor

**Assistant Professor, Hospitality and Tourism Management Studies**

### Degrees

EdD, Educational Leadership, Rowan University, Glassboro, NJ

MPA, Public Policy and Administration, Rutgers University, Graduate School, Camden, NJ

BA, Political Science, Rutgers University, Camden, NJ

### Teaching Focus

Human resource management, gaming and hotel operations, facilities management, policy and strategy

### Research Focus

Leadership and decision-making, workforce management, instructional design

### Recent Scholarship/Creative Work

Criscione-Naylor, N. "Simulating operational complexities: An experiential exercise with laundry." Paper for 2017 Eastern Academy of Management (EAM) Annual Conference (2017), Baltimore, MD.

Criscione-Naylor, N. "Create and accelerate learning with Adobe Presenter Add-on." Breakout session Presenter for The Junction of Technology and Teaching, New Jersey Research & Education Network Faculty Showcase (2017), Monmouth University, West Long Branch, NJ.



## Robert Ferguson

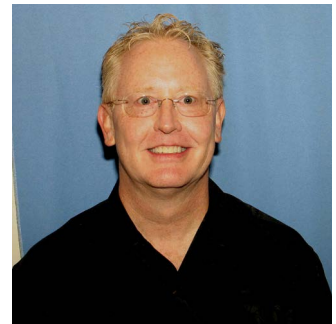
**Visiting Instructor Business Studies, Management**

### Degrees

MS, Organizational Development, the University of Pennsylvania, Philadelphia, PA  
BA, Communications, Stockton University, Galloway, NJ

### Teaching Focus

Strategic management and public policy, human resource management, introduction to management



## Zheng Li

**Assistant Professor, Computer Science**

### Degrees

PhD, Computer Science, Illinois Institute of Technology, Chicago, IL  
MS, Communication and Information Systems, University of Electronic Science & Technology of China, Chengdu, China  
BS, Computer Science, University of Electronic Science & Technology of China, Chengdu, China

### Teaching Focus

Computer architecture, programming, structured analysis and design, data structure and algorithms

### Research Focus

Real-time and embedded systems, parallel and distributed systems, cloud computing and embedded machine learning.

### Recent Scholarship/Creative Work

Zheng, Li, Shuibing He, and Li Wang, "Fixed-Priority Scheduling for Two-Phase Mixed-Criticality Systems. Transactions on Embedded Computing Systems (ACMTECS), 2017.

Shuibing He, Yang Wang, Zheng Li, Xian-He Sun, and Chengzhong Xu, "Cost-Aware Region-Level Data Placement in Multi-Tiered Parallel I/O Systems", IEEE Transactions on Parallel and Distributed Systems (IEEETPDS), Vol. 28, No. 7, pp. 1853-1865, 2017.

Zheng Li, Chunhui Guo, Xiayu Hua and Shangping Ren, "Reliability Guaranteed Energy Minimization On Mixed-Criticality Systems", Journal of Software and System (JSS), 112: 1-10, 2016



## Xu Niu

**Assistant Professor of Business Studies, Finance**

### Degrees

PhD, Finance, Texas Tech University, Lubbock, TX  
PhD, Mathematics, Texas Tech University, Lubbock, TX  
MS, Statistics, Texas Tech University, Lubbock, TX

### Teaching Focus

Personal financial management, investments, financial management, financial markets and institutions

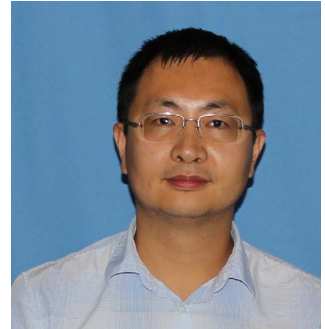
### Research Focus

Corporate finance, founders and family firms, executive compensation, ownership structure, managerial incentives, shareholder voting; financial education, mathematics education in business schools, mathematical finance, financial econometrics

### Recent Scholarship/Creative Work

Niu, Xu. "Do Family Successions Reduce Firm Performance? A Re-examination." Financial Management Association (FMA) Annual Meeting (2017).

Collins, Denton, Marquardt, Blair, .Niu, Xu. "CEO Equity-Based Incentives and Shareholder Say-on-Pay in the U.S." American Accounting Association Financial Accounting and Reporting Section (AAA-FARS) Midyear Meeting (2017).



## Behnam Tavakkol

**Assistant Professor of Business Studies, Analytics and Management**

### Degrees

PhD, Industrial and Systems Engineering, Rutgers University, Piscataway, NJ  
MSc, Statistics, Rutgers University, Piscataway, NJ  
MSc, Industrial and Systems Engineering, Kansas State University, Manhattan, KS

### Teaching Focus

Business analytics, statistical methods in business, operations management, management information systems, supply chain engineering

### Research Focus

Developing new data mining algorithms for: classification, clustering, clustering validation, feature selection, anomaly detection; Applicable to different fields such as: semiconductor manufacturing, weather climate, networks, images

### Recent Scholarship/Creative Work

Tavakkol, B., Jeong, MK., Albin, S.L. (2017). Object-to-group probabilistic distance measure for uncertain data classification. *Neurocomputing*, 230, 143-151.

Chang, S.I., Douglas-Mankin, K.D., Chang, M.J., Ang-Carabuena, L.A., Tavakkol, B. (2016). Identifying data-driven healthcare facilities: a case study in VHA hospitals. *International Journal of Six Sigma and Competitive Advantage*, 10.2, 98-111

Chang, S.I., Tavakkol, B., Chou, S.-H, Tsai, T.-R. (2014). Real-time detection of wave profile changes. *Computers & Industrial Engineering*, 75, 187-199.



## Yuli Zhang

**Assistant Professor of Business Studies, Marketing**

### **Degrees**

PhD, Marketing, (Anticipated 2018), Drexel University, Philadelphia, PA

MS, Business Administration, Northeast Petroleum University, Heilongjiang Sheng, China

BS, Economics, Northeast Petroleum University, Heilongjiang Sheng, China

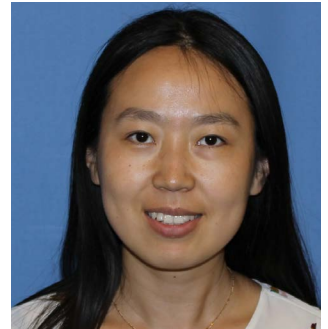
### **Teaching Focus**

Unconscious thoughts/distraction, visual perception and attention, strategic branding

### **Recent Scholarship/Creative Work**

Zhang, Yuli, Hyokjin Kwak, Haeyoung Jeong, and Marina Puzakova, "The Effect of Facing Direction of Product Images on Product Attitude: The Moderating Role of Desirability and Feasibility", four studies are complete, being prepared for submission to Journal of Marketing Research.

Zhang, Yuli, Hyokjin Kwak, Marina Puzakova, Charles R. Taylor, "Going It Alone or Together: The Role of Space between Products on Consumer Perceptions of Price Promotions", four studies are complete, being prepared for submission to Journal of Marketing.



# School of Education

## Dean

Claudine Keenan

## Assistant Dean

John Gray

[stockton.edu/educ](http://stockton.edu/educ)



## Tracey Schneider

**Assistant Professor of Organizational Leadership**

### Degrees

PhD, Education Policy, Planning and Leadership, ABD Dec. 2018

The College of William & Mary, Williamsburg, J.D., University of Richmond School of Law Richmond, VA

BS/BA, Business Administration, University of Richmond, Richmond, VA

### Teaching Focus

Education law, education policy and advocacy, leadership ethics, research methods

### Research Focus

Leadership development (in particular how leaders develop knowledge and skills to address legal and ethical issues), education law and policy



## Sequetta Sweet

**Assistant Professor of Organizational Leadership**

### Degrees

EdD, Executive Leadership, St. John Fisher College, Rochester, NY

MS, Human Resources, St. John Fisher College, Rochester, NY

BS, Computer Science, Rensselaer Polytechnic Institute, Troy, NY

### Teaching Focus

Management information systems, leadership, organizational management

### Research Focus

Leadership in entrepreneurship, e-business tools and technologies





## Mingjie Bao

### Visiting Scholar

MA, English, Hubei University, Wuhan, Hubei, China

BA, English, Hubei University of Education, Wuhan, Hubei, China

### Research Focus

ESL and intercultural communication



# School of General Studies

## Dean

Robert Gregg

## Associate Dean Assistant Dean

Peter Hagen

Claire Lopatto

[stockton.edu/gens](http://stockton.edu/gens)



## Joseph Cirio

Assistant Professor of Writing & First-Year Studies

### Degrees

PhD, Florida State University, Tallahassee, FL

MA, Florida State University, Tallahassee, FL

BS, Kutztown University of Pennsylvania, Kutztown, PA

### Teaching Focus

English, rhetoric and composition and first-year writing, reading and research

### Research Focus

Writing assessment and how it manifests within everyday writing.



## Aleksondra Hultquist

Assistant Professor of Critical Thinking & First-Year Studies

### Degrees

PhD, University of Illinois, Urbana-Champaign, Champaign, IL

MA, San Francisco State University, San Francisco, CA

BFA, Rutgers University, New Brunswick, NHJ

### Teaching Focus

Critical thinking and a variety of general studies courses, including poetry, mathematics and the passions

### Research Focus

Literature and culture of the long eighteenth-century, especially women writers and the passions.

### Recent Scholarship/Creative Work

Manuscript, *The Amatory Mode: Amatory Fiction's Passionate Legacy*

Editing vol. 6 (*Love-Letters between a Nobleman and his Sister*) of the upcoming collected works of Aphra Behn by Cambridge University Press (2022).



## Mariam Hussein

**Visiting Instructor of Mathematics & First-Year Studies**

### Degrees

MS, Mathematics, University of Texas Rio Grande Valley, Edinburg, TX  
BS, Biological Science, Rowan University, Glassboro, NJ  
AS, Biology, Atlantic Cape Community College, Mays Landing, NJ  
AS, Chemistry, Atlantic Cape Community College, Mays Landing, NJ

### Teaching Focus

Algebra, administered assessments, utilized different pedagogical approaches, and utilized data-driven instruction



## Ann E. Millin

**Ida E. King Distinguished Visiting Scholar of Holocaust Studies**

### Degrees

PhD, Jewish History, School for Graduate Studies, Hebrew Union College-Jewish Institute of Religion, Cincinnati, OH  
MA, Religious Studies, Vanderbilt University, Nashville, TN  
BA, Theatre and Speech, Macalester College, St. Paul, MN

### Teaching Focus

Holocaust studies, Nazi genocide, Jewish resistance, Judaic studies, and Nazi propaganda

### Research Focus

Americans and the Holocaust, Jewish Resistance, path to Nazi genocide, collaboration and complicity during the Holocaust, and the Power of Nazi Propaganda.



## Leanne Sims

**Dr. Vera King Farris Visiting Fellow**

### Degrees

PhD, American Studies, University of Hawaii at Manoa, Honolulu, HI  
MA, Education, Fordham University, Bronx, NY  
MA, Performance Studies, New York University, New York, NY  
MA, Creative Writing & Literary Studies, University of Wisconsin-Milwaukee, Milwaukee, WI  
BA, English, University of Wisconsin-Madison, Madison, WI

### Teaching Focus

Women's, gender and sexuality studies and American studies

### Research Focus

Representations of gender, race, ethnicity, and sexuality in US popular culture, Literary Studies, Transnational feminist cultural studies, critical race studies, American crime and punishment, women of color feminism, life writing and trauma studies

### Recent Scholarship/Creative Work

American Studies Outreach Graduate Scholarship Award, fall 2015, University of Hawaii at Manoa, American Studies Department.

Merit Scholarship, 2012, Department of American Studies, University of Hawaii at Manoa, Honolulu, HI



## Siobahn Suppa

**Assistant Professor of Mathematics & First-Year Studies**

### Degrees

PhD, Education with concentration in Mathematics, University of Delaware, Newark, DE  
MS, Mathematics, University of Delaware, Newark, DE  
BS, Mathematics with concentration in Statistics and Operations Research, Physics minor,  
Rowan University, Glassboro, NJ

### Teaching Focus

Mathematics for K-8 teachers, intermediate algebra, pre-calculus, calculus, analytic geometry and calculus a & b

### Research Focus

Understanding the effects of mathematics teacher preparation on the quality of classroom teaching and students' learning, Elementary pre-service mathematics teachers making the transition from formal to early algebra, aligning secondary mathematics teacher education programs with the common core – an emphasis on mathematical modeling, and mathematical discourse in geometry.



## Lisa Youngblood

**Instructor of Writing and First-Year Studies**

### **Degrees**

JD, Law, Widener University School of Law, Wilmington, DE  
BA, Political Science, Villanova University, Villanova, PA  
AA, Liberal Arts, Delaware County Community College, Media, PA

### **Teaching Focus**

First-year writing, argument and persuasion, and legal, social and ethical issues.

### **Research Focus**

Critical thinking in ethical reasoning, ethics and political ideologies.



# School of Health Sciences

**Interim Dean**  
Peg Slusser

**Assistant Dean**  
Ariane Newman

[stockton.edu/shs](http://stockton.edu/shs)



## Cecilia Boyd

**Visiting Assistant Professor of Nursing**

### Degrees

DNP, Nursing Practice, Rutgers University, Camden NJ  
MSN, Nursing, Thomas Jefferson University, Philadelphia PA  
BSN, Nursing, Thomas Jefferson University, Philadelphia PA

### Teaching Focus

Health informatics, mental health nursing, health simulation

### Recent Scholarship/Creative Work

Podium presentation at the NJSNA on Nursing practice and professionalism  
Publication in the *Journal of Informatics in Nursing* entitled the Perils of Social Media: Tips for nurses.



## Lauren Kirk

**Visiting Assistant Professor of Nursing**

### Degrees

MSN, Drexel University, Philadelphia, PA  
BSN, York College of Pennsylvania, York PA

### Teaching Focus

Emergency and surgical nursing



## Nicole Milan-Tyner

Visiting Assistant Professor of Health Science

### Degrees

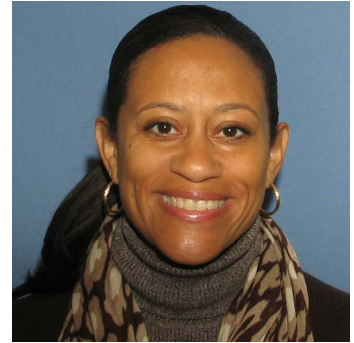
EdD, Educational Leadership, Rowan University, Glassboro, NJ  
MA, Urban Affairs and Public Policy, University of Delaware, Newark, DE  
BA, Sociology and English, Rutgers University, New Brunswick, NJ

### Teaching Focus

Health science

### Recent Scholarship/Creative Work

Doctoral research entitled *The Impact of Race, Gender, and Class on Career Development: Perceptions of African American Women*.



## Bryce Muth

Instructor of Exercise Science

### Degrees

PhD, (ABD) Applied Physiology, University of Delaware, Newark, DE  
MS, Exercise Science, East Stroudsburg University, East Stroudsburg, PA  
BS, Exercise Science, East Stroudsburg University, East Stroudsburg, PA

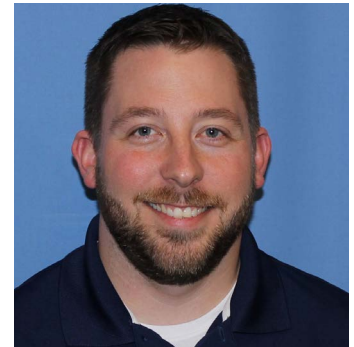
### Teaching Focus

Exercise science

### Recent Scholarship/Creative Work

Three currently funded research projects: 1) Mitochondria derived oxidative stress in chronic kidney disease, 2) Promoting recovery optimization with WALKing exercise after stroke, and 3) Vascular effects of dietary potassium in humans.

Currently has a manuscript in press with the *Journal of American Society of Hypertension*



## Sandra Torcato

**Visiting Assistant Professor of Health Science**

### **Degrees**

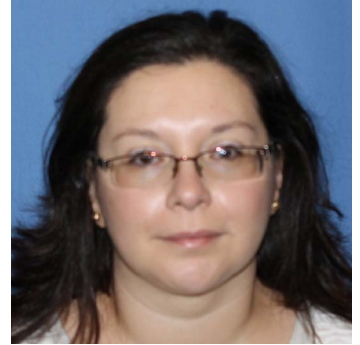
DPT, Stockton University, Galloway, NJ

MPT, Stockton University, Galloway, NJ

B.S. in Biology, Stockton University, Galloway, NJ

### **Teaching Focus**

Health science





# School of Natural Sciences and Mathematics

## Dean

Peter Straub

## Assistant Dean

Cheryl Vaughn-Jones

[stockton.edu/nams](http://stockton.edu/nams)



## Christopher DeSantis

Visiting Assistant Professor of Chemistry, Part Time

### Degrees

PhD, Chemistry, Ohio State University, OH

BA, Chemistry, Rutgers University, New Brunswick, NJ, Columbus, OH

### Teaching Focus

Chemistry

### Research Focus

Biophysical chemistry



### Recent Scholarship/Creative Work

Mao, Jie, DeSantis, Chris, Bong, Dennis. "Small Molecule Recognition Triggers Secondary and Tertiary Interaction in DNA Folding and Hammerhead Ribozyme Catalysis." *Journal of the American Chemical Society*. doi:10.1021/jacs.7b05448.

## Sarah Gray

Assistant Professor of Chemistry

### Degrees

PhD, Analytical Chemistry, University of Montana, Missoula, MT

BA, Chemistry, St. Mary's College of MD, St. Mary's, MD

### Teaching Focus

Analytical chemistry

### Research Focus

Environmental chemistry



### Recent Scholarship/Creative Work

Gray, S. E. C., DeGrandpre, M. D., Langdon, C., Corredor, J. E. "Short-term and Seasonal pH, pCO<sub>2</sub> and Saturation State Variability in a Coral-Reef Ecosystem." *Global Biogeochemical Cycles* (2012): 26, GB3012. doi:10.1029/2011GB004114.

Cullison Gray, S. E., DeGrandpre, M. D., Moore, T. S., Martz, T. R., Friederich, G. E., Johnson, K. S. "Applications of *in situ* pH Measurements for Inorganic Carbon Calculations." *Marine Chemistry* (2011): 125 (1-4), 82-90.

## Kelly Hagberg

Visiting Assistant Professor of Biology

### Degrees

PhD, Molecular Biosciences, Washington State University, Pullman, WA  
BS, Biochemistry and Molecular Biology, University of Wisconsin-Eau Claire, Eau Claire, WI

### Teaching Focus

Microbiology

### Research Focus

Molecular biology



### Recent Scholarship/Creative Work

Hagberg, K. L., Yurgel, S. N., Mulder, M., Kahn, M. L.. "Interaction between Nitrogen and Phosphate Stress Responses in Sinorhizobium Meliloti." *Frontiers in Microbiology*, 7 (2016): 1928. <http://doi.org/10.3389/fmicb.2016.01928>

## Bruce Patterson

Visiting Assistant Professor of Biology

### Degrees

PhD, Biochemistry/Biophysics, University of California, San Francisco, San Francisco, CA  
BS, Botany, University of Ohio, Athens, OH

### Teaching Focus

Introductory biology and genetics

### Research Focus

Molecular biology and genetics



### Recent Scholarship/Creative Work

Patterson, B. "Genetic Techniques for Enhancing Biochemical and Structural Characterization of Dictyostelium Myosin II." *Methods* 22 (2000): 299-306.

Uyeda, T. Q.-P., Tokuraku, K., Kaseda, K., Webb, M.R., Patterson, B. "Evidence for a Novel, Strongly Bound Acto-S1 Complex Carrying ADP and Phosphate Stabilized in the G680V Mutant of Dictyostelium Myosin II." *Biochemistry* 41(30) (2002): 9525-9534.

Uyeda, T. Q.-P., Patterson, B., Mendoza, L., Hiratsuka, Y. "Amino Acids 519-524 of Dictyostelium Myosin II Form a Surface Loop that Aids Actin Binding by Facilitating a Conformational Change." *Journal of Muscle Research and Cell Motility* 23 (2003):685-95.

## Alexis Moore Crisp

Visiting Assistant Professor of Biology

### Degrees

PhD, Biological Sciences. University of Nevada, Las Vegas, Las Vegas, NV  
MS, Biological Sciences, Youngstown State University, Youngstown, OH  
BS, Psychology and BA Philosophy and History and Philosophy of Science,  
University of Pittsburgh, Pittsburg, PA

### Teaching Focus

Comparative vertebrate anatomy

### Research Focus

Biomechanics of vertebrate movement

### Recent Scholarship/Creative Work

Rose, J., Moore, A. L., Russell, A. P., Butcher, M. T. "Functional Osteology of the Forelimb Digging Apparatus of Badgers." *J Mammal* 95 (2014): 543-558.

Moore, A. L., Budney, J. E., Russell, A. P., Butcher, M. T. "Functional Specialization of the Intrinsic Thoracic Limb Musculature of the American Badger (*Taxidea taxus*)." *J Morph* 274 (2013): 25-48.



# School of Social and Behavioral Sciences

**Interim Dean**  
Marissa Levy

**Assistant Dean**  
Mary Beth Sherrier

[stockton.edu/sobl](http://stockton.edu/sobl)



## Anthony Austin

**Visiting Assistant Professor of Psychology**

### Degrees

PhD, Experimental Psychology, Ohio University, Athens, OH  
MA, Experimental Psychology, Cleveland State University, Cleveland, OH  
BS, Psychology, Tennessee Technological University, Cookeville, TN

### Teaching Focus

Health psychology and statistical methods

### Research Focus

Impact of psychological stress on markers of disease

### Recent Scholarship/Creative Work

Austin, Anthony, Pelletier, Roxanne, Pilote, Louise, & Rabi, Doreen. "Factors associated with study completion in patients with premature acute coronary syndrome," 2014, *Public Library of Sciences: One*. doi: 10.1371/journal.pone.0173594



## Tracie Barberi-Matthews

**Visiting Assistant Professor of Social Work**

### Degrees

MA, Social Work, Fordham University, New York, NY  
BA, Social Work, Georgian Court University, Lakewood, NJ

### Teaching Focus

Social work research, leading/managing human service, social work practice

### Research Focus

Anxiety/depression, hospice, integrative therapies, group work, fundraising, geriatrics



## Malav J. Kanuga

Visiting Assistant Professor of Anthropology

### Degrees

PhD, Cultural Anthropology, City University of New York, NY  
MA, Cultural Anthropology, City of University of New York, NY  
BA, Political Philosophy, Cornell University, NY

### Teaching Focus

Cultural anthropology, architecture

### Research Focus

Postcolonial development, social theory, political economy and society

### Recent Scholarship/Creative Work

Founding Editor and Publisher, Director of Research Common Notions, Publishing & Programming Platform, 2010–Present

[www.commonnotions.org](http://www.commonnotions.org)



## Ruibin Lu

Assistant Professor of Criminal Justice

### Degrees

PhD, Criminal Justice and Criminology, Washington State University, Pullman, WA  
MA, Criminal Justice, Washington State University, Pullman, WA  
BL, Nankai University, China

### Teaching Focus

Courts, law & procedure, research & evaluation in criminal justice

### Research Focus

Specialty courts, US judicial system, drug and alcohol use

### Recent Scholarship/Creative Work

Cao, Liqun., Lu, Ruibin, & Mei, Xiaohan "Acceptance of prostitution and its social determinants in Canada." *International Journal of Offender Therapy and Comparative Criminology* 61, no. 1 (2017): 1171-1190.



## Mariam Majd

### Instructor of Economics

#### Degrees

MA, Economics, University of Massachusetts-Amherst, Amherst, MA  
BA, Political Science, Stockton University, Galloway, NJ

#### Teaching Focus

Intro to macroeconomics

#### Research Focus

Global financial systems

#### Recent Scholarship/Creative Work

Majd, Mariam. "Financial Stability Working Group of the Institute for New Economic Thinking, Bard College", March 2017 (presenter)



## David Rosen

### Visiting Assistant Professor of Psychology

#### Degrees

PhD, Psychology, Drexel University, Philadelphia, PA  
MS, Psychology, Drexel University, Philadelphia, PA  
BA, Psychology, Emory University, Atlanta, GA

#### Teaching Focus

Intro to psychology, cognitive psychology

#### Research Focus

Research and develop K-12 STEM programs, statistical analysis, music cognition, cognitive neuroscience.

#### Recent Scholarship/Creative Work

David S. Rosen, Brian Erickson, Kim E. Youngmoo, Daniel Mirman, Roy H. Hamilton, and John Kounios. "Anodal tDCS to right dorsolateral prefrontal cortex facilitates performance for novice jazz improvisers but hinders experts," *Frontiers in Human Neuroscience*, no. 10 (2016): 579, <https://www.frontiersin.org/article/10.3389/fnhum.2016.00579>.



## Nusret M. Sahin

**Assistant Professor of Criminal Justice**

### Degrees

PhD, Criminal Justice and Criminology, Rutgers University, Newark, NJ  
MA, Criminal Justice, Rutgers University, Newark, NJ  
BA, Public Administration, Andalou University, Eskisehir, Turkey

### Teaching Focus

Policing, introduction to criminal justice, statistics for criminal justice

### Research Focus

Race, trust and police legitimacy

### Recent Scholarship/Creative Work

Sahin, Nusret Mesut & Mehmet Fatih Bastug, "Investigative Ethics," In Selcuk Atak and Serdar Kenan Gul (Eds.), *Occupational Ethics* 2014: 501-512.



## Earnestine W. Simpson

**Visiting Assistant Professor of Social Work**

### Degrees

MSW, Social Work, Smith College School for Social Work, Northampton, MA  
BS, Social Work, Dillard University, New Orleans, LA

### Teaching Focus

Intro to social work, race, ethnicity, diversity, social work practice

### Research Focus

Women's addiction treatment, adolescent behavioral issues and women with trauma



**Welcome**  
**New**  
**Faculty**  
2018-2019