



**School of Health Sciences**

Effective 9/1/24

**Interim Provost & Vice President for Academic Affairs  
Dr. Michael Palladino**

**Dean, School of Health Sciences  
Dr. Brent Arnold**

**Assistant Dean  
Dr. Lee Bryant**

**Chief Nurse Administrator / Associate Dean for Nursing  
Dr. Sheila A. Quinn**

**Academic Services Specialist  
PSS3, AFT  
Amanda Allen**

**Administrative Assistant to the Dean, PSS2  
Brenda Sterling**

**Simulation Coordinator –  
PSS1, AFT  
Kenneth Davis**

**Manager, Health Science Accreditation and Clinical Placements  
Renee Cavezza**

**Nursing Clinical Placement Specialist PSS4, AFT  
Brianna McKee**

**Coordinator of Continuing Education, PSS4  
Kent Mayhew**

**Principle Clerk Typist  
Nora Kennedy**

**Budget Coordinator-  
PSS 4  
Haley Hancharuk**

**Healthcare Affiliation Coordinator (PSS4)  
Kahlyll Wilson**

**Director, Stockton University at Manahawkin  
Michele Collins-Davies**

**Clinical Supervisor, Speech & Hearing Clinic/PSS1 – AFT  
Amanda Copes**

**Professional Services Specialist 4  
Linda Boyd**

**Assistant Supervisor 3  
Nicole Heinrich**

**BS in Health Science (12)**  
Anthony Dissen – IN  
**Luis Garcia – AT**  
Trina Gipson-Jones - AT  
Yulong (Helen) Gu – AC  
Nicole Milan-Tyner - AT  
Sreelekha Prakash – AC  
Michele Previti – AC  
Amee Shah – AC  
Kerri Sowers -AC  
Diane Laverty – AT  
Heather Green– AT  
Anthony Austin – TS

**Exercise Science (2)**  
**Kelly Dougherty – AC**  
Bryce Muth –AT  
Traci McCarthy - AT  
Fred Schuster - TS

**Public Health (4)**  
Elizabeth Calamidas –P  
Ronald Caplan – AC  
**Tara Crowell – AC**  
Stephanie Griffin - AC

**Public Health Minor  
Tara Crowell**

**Communication Disorders (5)**  
**Stacey Cassel – AC**  
**Phillip Hernandez – AC**  
Monika Pawlowska- AC  
Maryann Schiattarella - AFC  
Kelly Maslanik– CS  
Michelle Swartz - AT

**Integrated Health Minor  
MaryLou Galantino**

**Occupational Therapy (6)**  
Janette Boney – CESS  
Susan Pullman-Bernstein-CS  
Kimberly Furphy – AC  
**Mary Kientz – AC**  
Rebecca Mannel – AT  
Jennifer Calabrese – AT  
Felicia Chew - AT

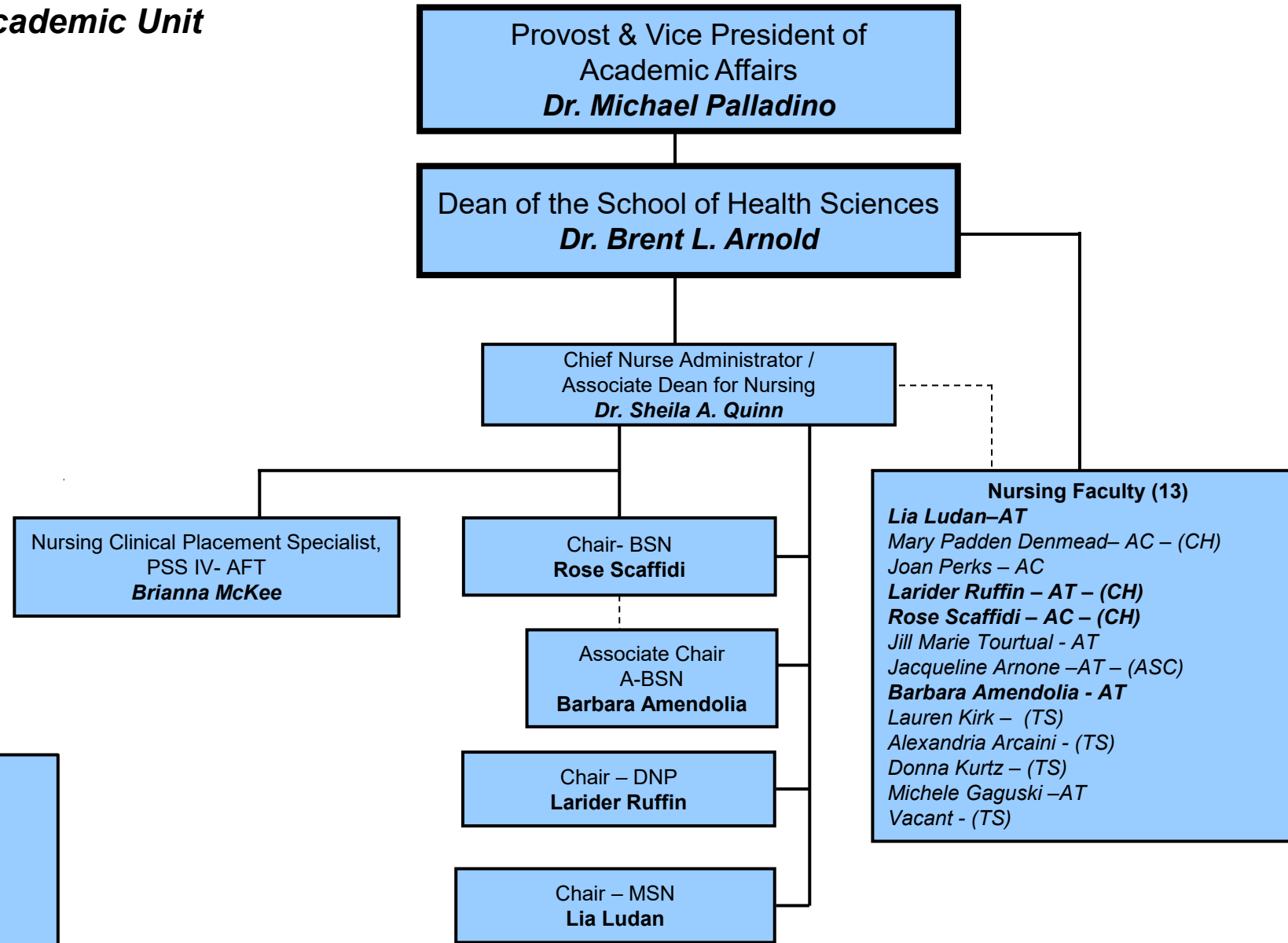
**Physical Therapy (9)**  
Matthew Romen -DCE  
Lauren DelRossi – AC  
Mary Lou Galantino –DP  
Robert Marsico – AT  
M. Alysia Mastrangelo- P  
**Patricia McGinnis – P**  
Thomas Nolan – AC  
Rania Almajid - AT  
William Buchala- AT

**Nursing (13)**  
**Lia Ludan–AT (MSN)**  
Mary Padden – AC  
Joan Perks – AC  
**Larider Ruffin – AC (DNP)**  
**Rose Scaffidi – AC (BSN)**  
Jill Marie Tourtual - AT  
Jacqueline Arnone –AT  
**Barbara Amendolia – AT (ABSN)**  
Lauren Kirk – TS  
Alexandria Arcaini- TS  
Donna Kurtz – TS  
Michele Gaguski – AT

KEY: I – Instructor / AT – Assistant Professor / AC – Associate Professor / DP – Distinguished Professor / P – Professor / VA – Visiting Assistant Professor / CS – Clinical Specialist (NTTP)/ TS – Teaching Specialist (NTTP) **Bold - Program Chair**



**School of Health Sciences  
Nursing Academic Unit**



**KEY:**  
 I – Instructor  
 AT – Assistant Professor  
 AC – Associate Professor  
 DP – Distinguished Professor  
 P – Professor  
 VA – Visiting Assistant Professor  
 VI- Visiting Instructor  
 CS – Clinical Specialist (NTP)  
 TS - Teaching Specialist  
 CH – Program Chair  
 ACH- Program Associate Chair

**Nursing Faculty (13)**  
**Lia Ludan-AT**  
 Mary Padden Denmead- AC – (CH)  
 Joan Perks – AC  
**Larider Ruffin – AT – (CH)**  
**Rose Scaffidi – AC – (CH)**  
 Jill Marie Tourtual - AT  
 Jacqueline Arnone –AT – (ASC)  
**Barbara Amendolia - AT**  
 Lauren Kirk – (TS)  
 Alexandria Arcaini - (TS)  
 Donna Kurtz – (TS)  
 Michele Gaguski –AT  
 Vacant - (TS)