

DRAFT

LIBRARY LEARNING COMMONS

Plans for Renovation to the Academic Spine, E -Wing



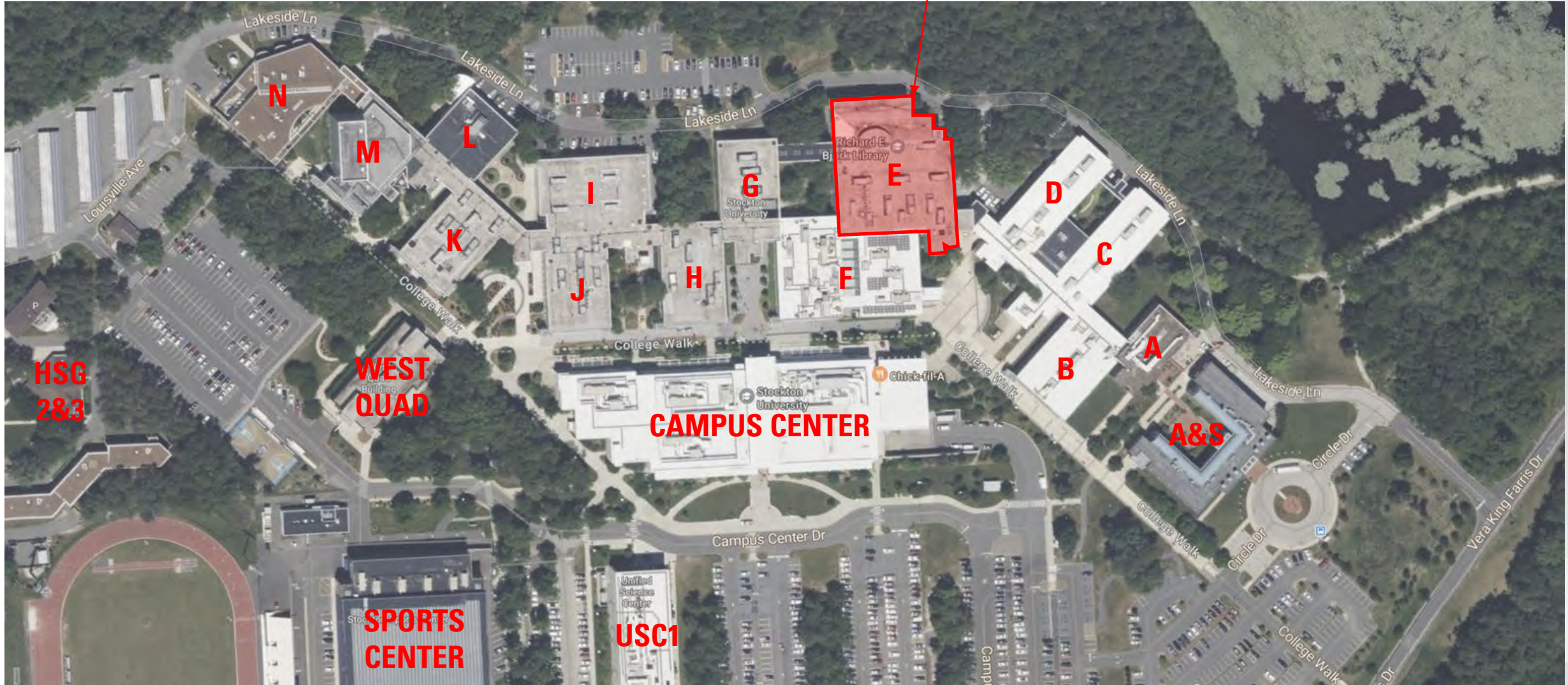
LOGISTICS PLAN

January 2024

MAIN ACADEMIC SPINE

OVERALL PROJECT LOCATION

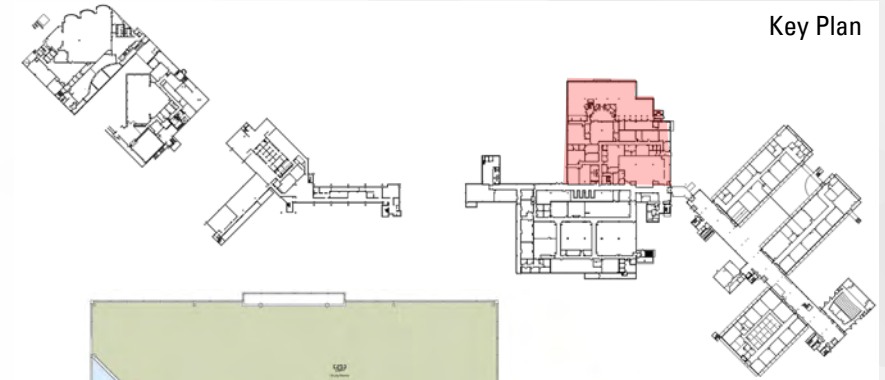
AERIAL PHOTOGRAPH



DRAFT

CURRENT SPACE UTILIZATION

E-WING



Key Plan



000 LEVEL

Dept Code	Dept Name	Area
ADF	Administration and Finance	4,512
ARHU	School of Arts and Humanities	2,477
GRAPH	Graphics	2,264
LIBRY	Library Services	11,485
MEDIA	PRODUCTION SERVICES	4,256
PLANT	Plant Operations	1,403
TELEC	Telecommunications & Network Infrastructure	20
Total		26,417



100 LEVEL

Dept Code	Dept Name	Area
HLTH	Health & Wellness	294
LIBRY	Library Services	24,920
PLANT	Plant Operations	2,892
TELEC	Telecommunications & Network Infrastructure	26
Total		28,132

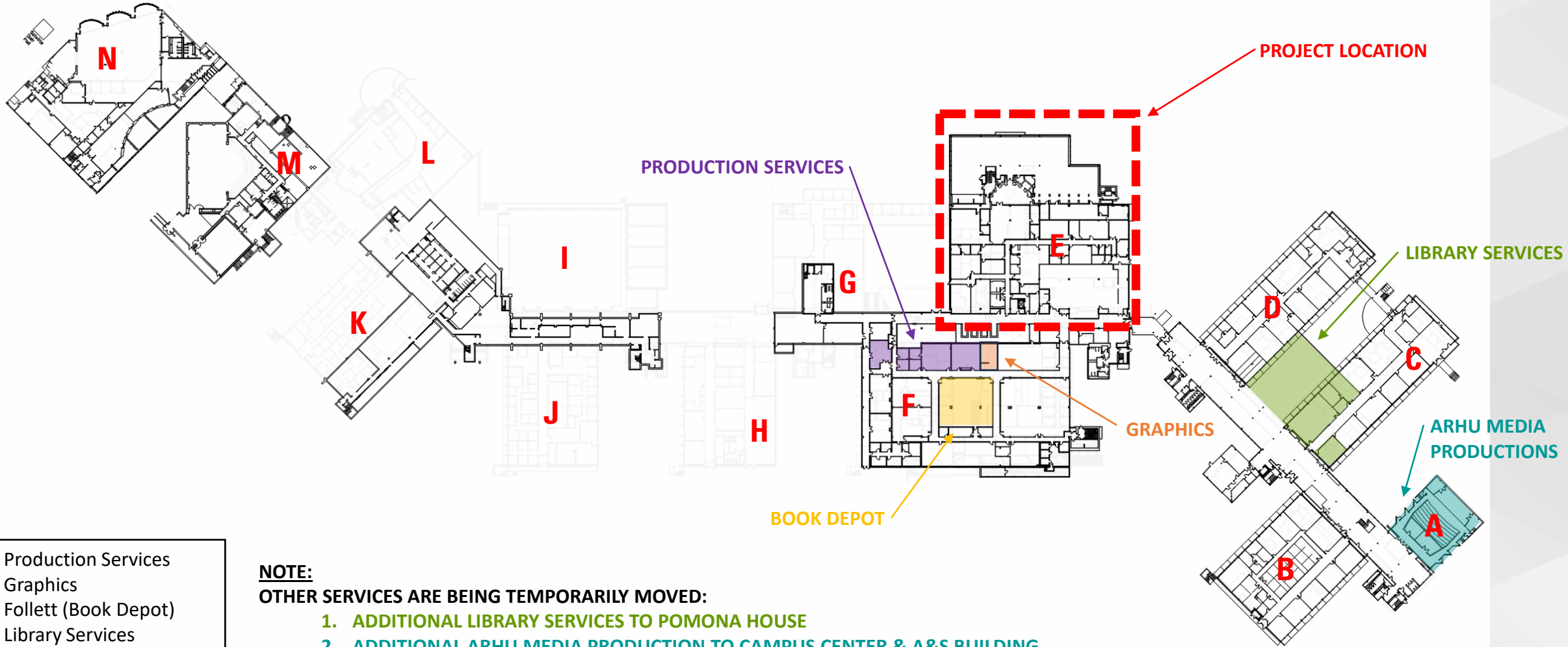


200 LEVEL

Dept Code	Dept Name	Area
AAF	Academic Affairs	473
BUSN	School of Business	64
GENS	School of General Studies	5,088
LIBRY	Library Services	20,112
NAMS	School of Natural Sciences and Math	201
PLANT	Plant Operations	1,065
SOBL	Social and Behavioral Sciences	90
TELEC	Telecommunications & Network Infrastructure	15
Total		27,108

RELOCATION PLAN – MULTIPLE TEMPORARY MOVES

ACADEMIC SPINE – 000 LEVEL

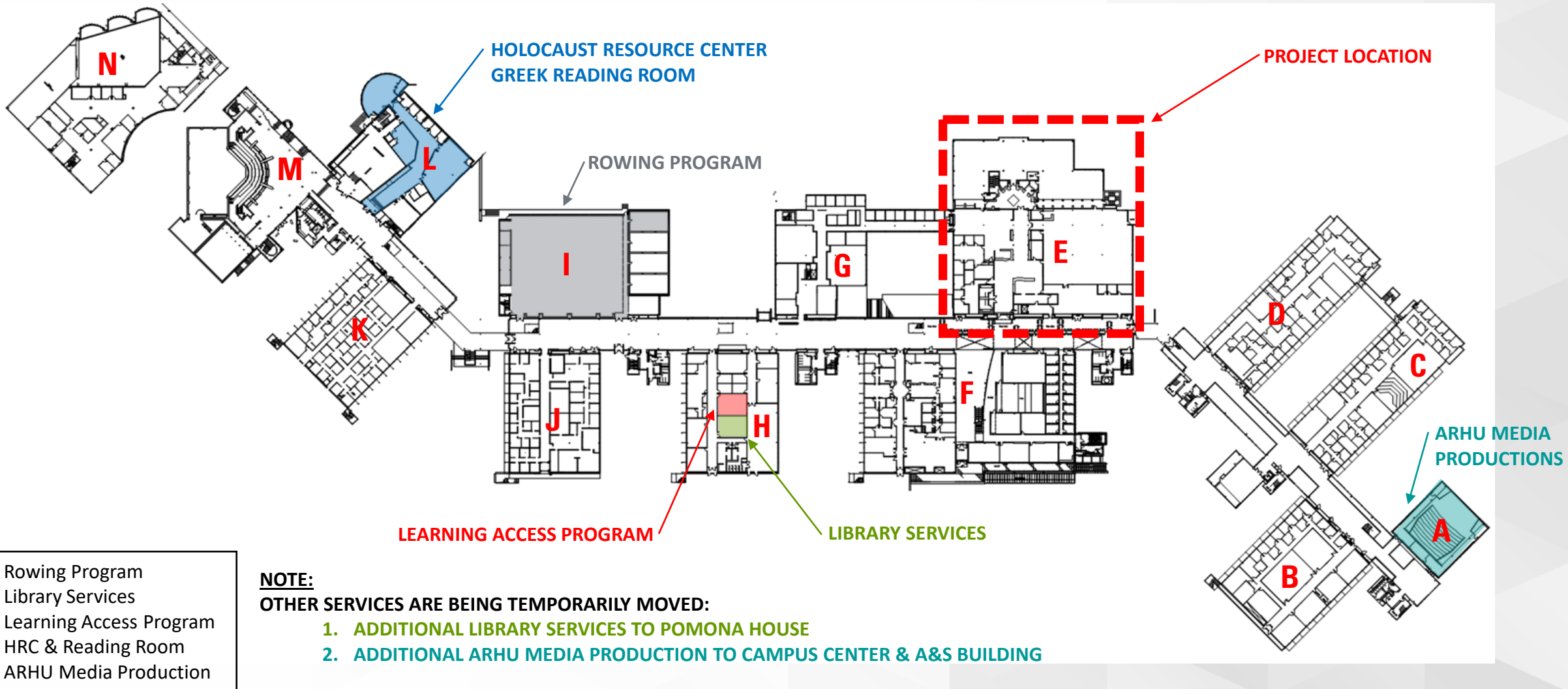


- Production Services
- Graphics
- Follett (Book Depot)
- Library Services
- ARHU Media Production

NOTE:
OTHER SERVICES ARE BEING TEMPORARILY MOVED:
1. ADDITIONAL LIBRARY SERVICES TO POMONA HOUSE
2. ADDITIONAL ARHU MEDIA PRODUCTION TO CAMPUS CENTER & A&S BUILDING

RELOCATION PLAN – MULTIPLE TEMPORARY MOVES

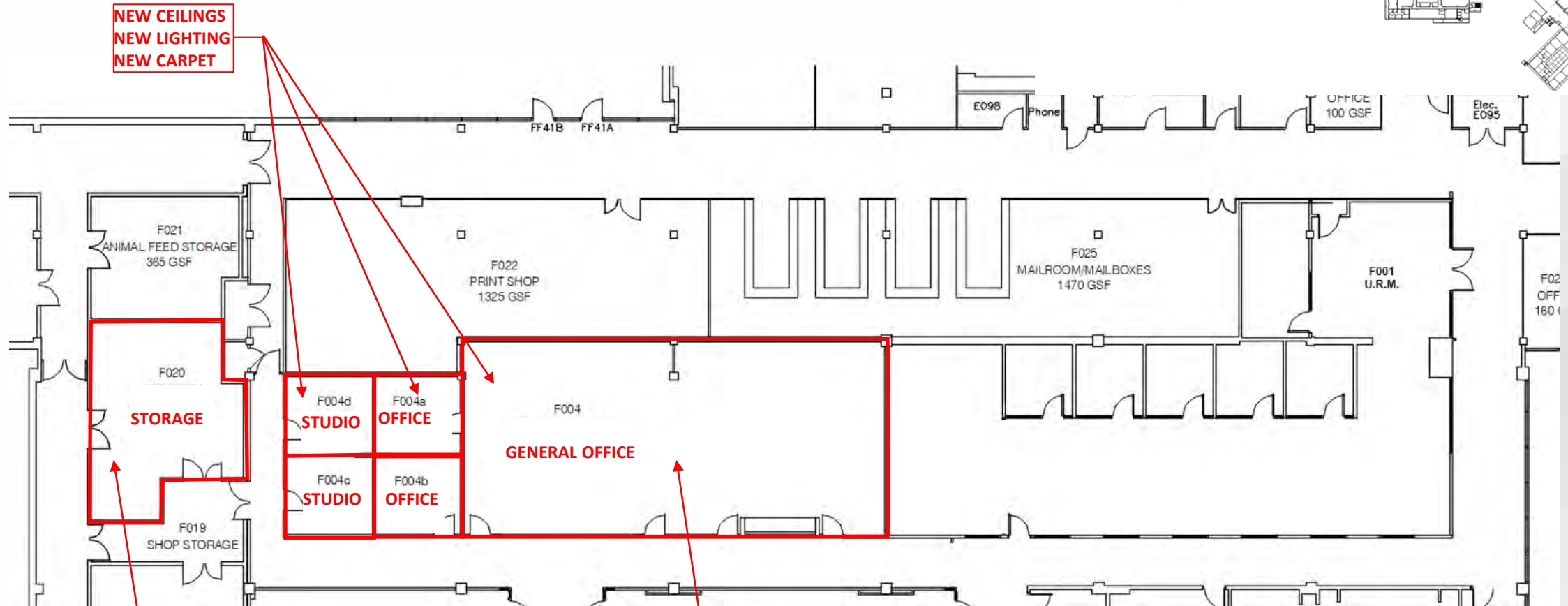
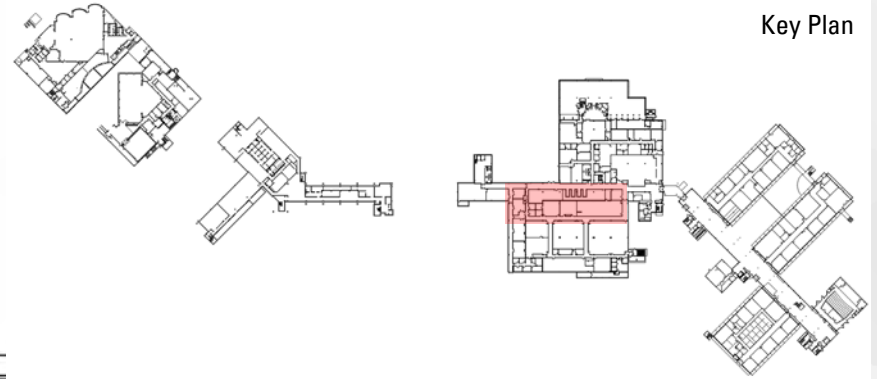
ACADEMIC SPINE – 100 LEVEL



DRAFT

PRODUCTION SERVICES - PROPOSED

Lower Level - 000



**NEW CEILINGS
NEW LIGHTING
NEW CARPET**

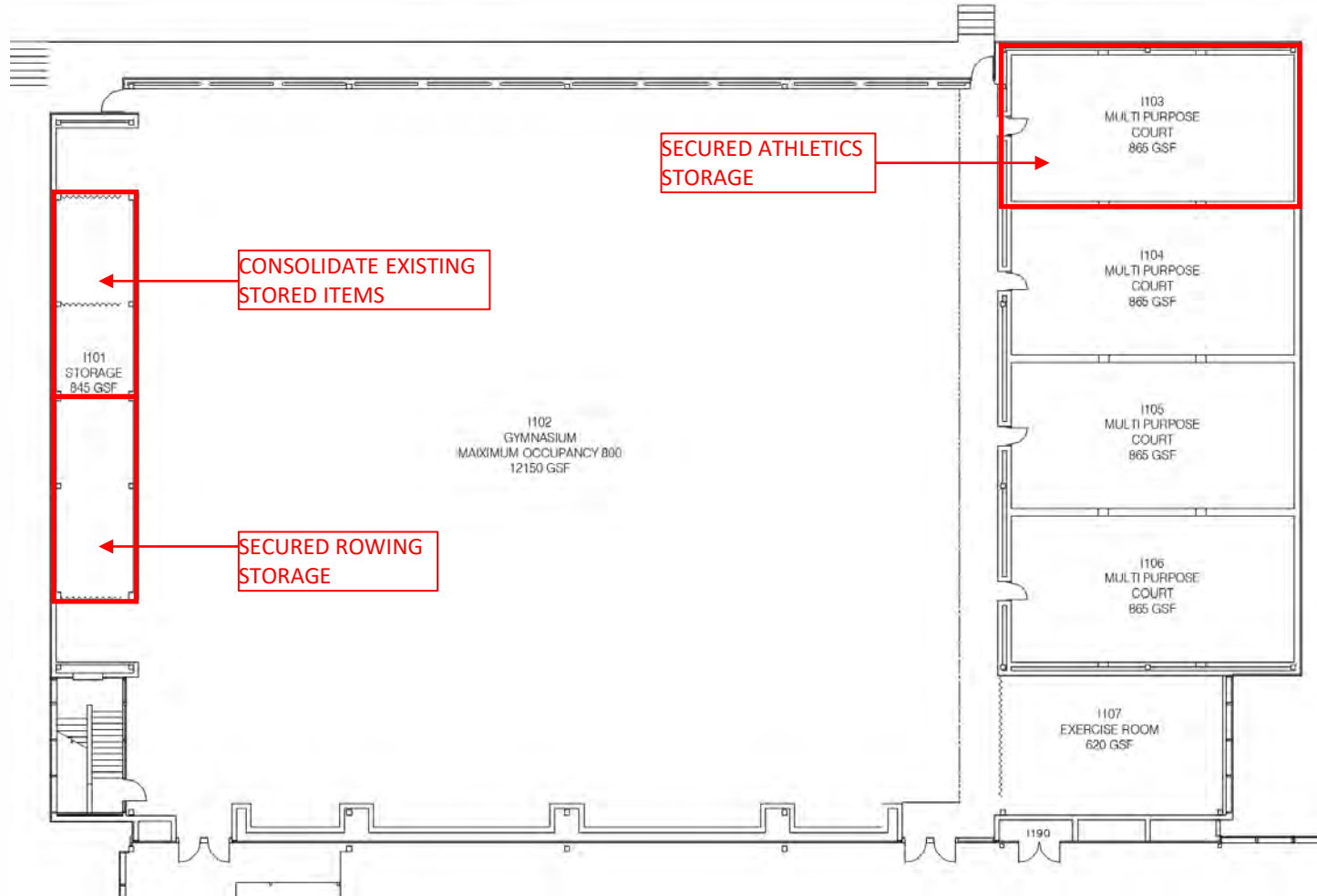
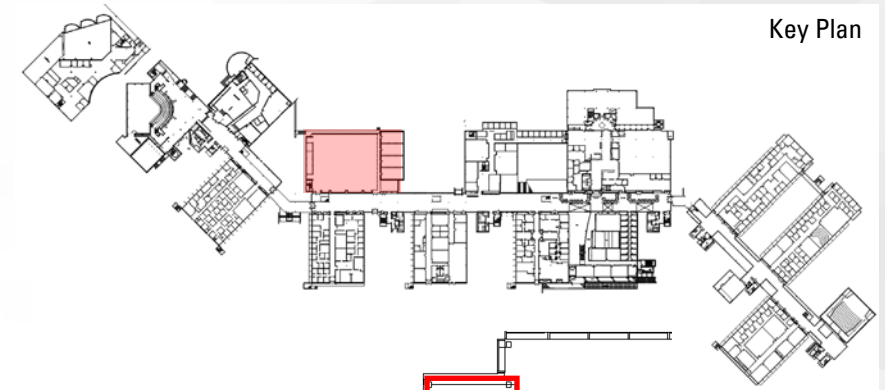
CLEAR ROOM

**ROWING PROGRAM TO BE
RELOCATED TO I-WING**

THIS MOVE WILL BE PERMANENT

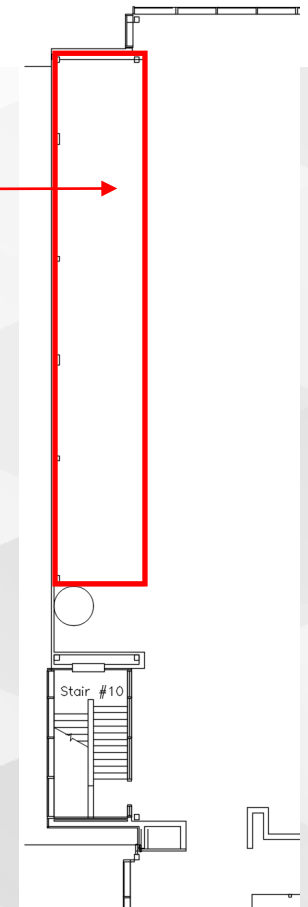
ROWING PROGRAM- PROPOSED

Main Level - 100



100 LEVEL

ROWING AREA
20-25 ERG SETUP
REMOVE EXSITING BLINDS
INSTALL POLISHED
STAINLESS-STEEL AT WALL

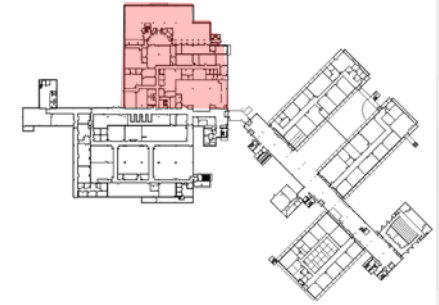
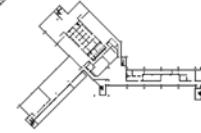


MEZZANINE LEVEL

DRAFT

GRAPHICS - EXISTING

Lower Level - 000



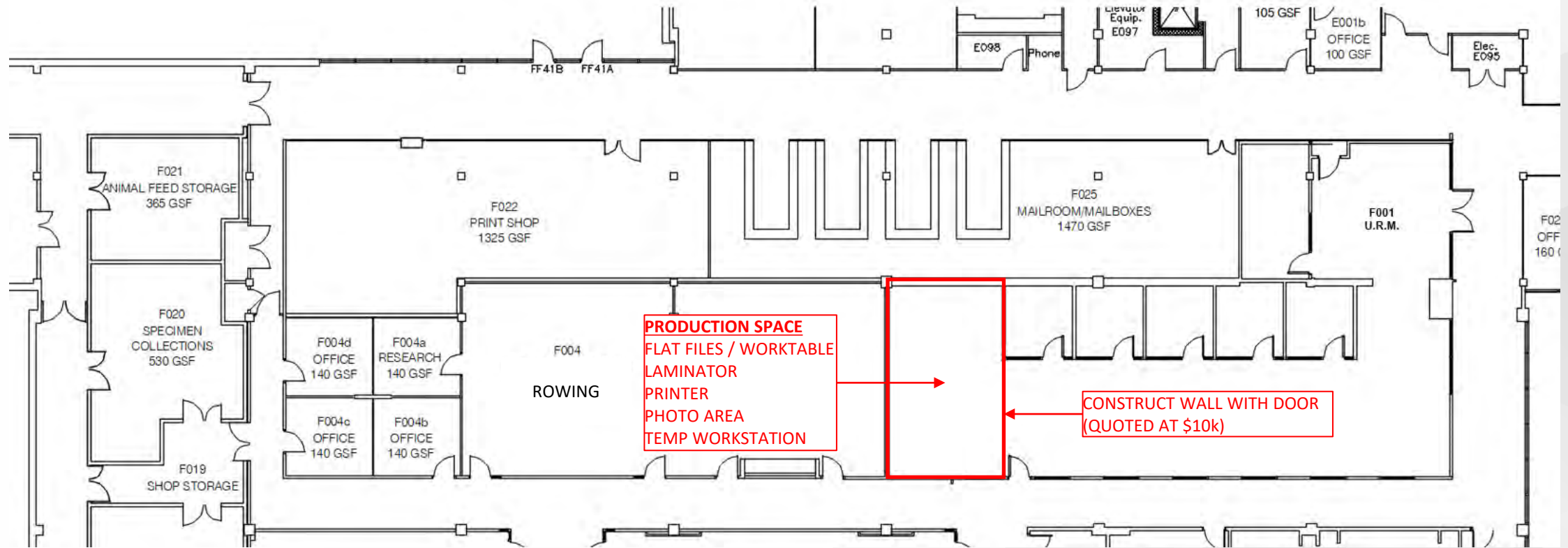
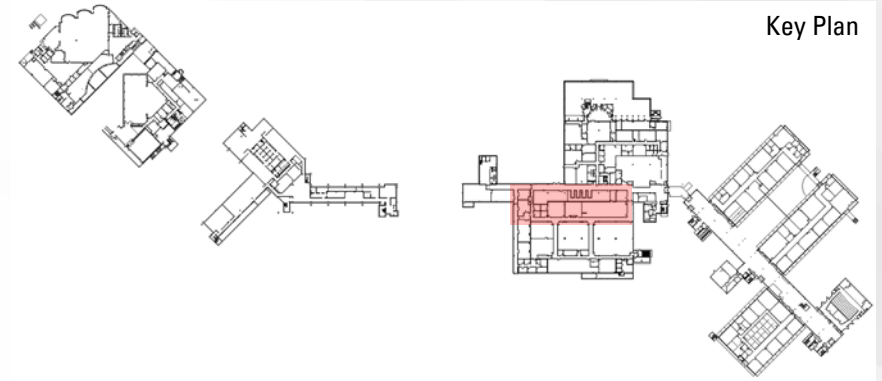
Key Plan



Dept Code	Dept Name	Area
ADF	Administration and Finance	4,512
ARHU	School of Arts and Humanities	2,477
GRAPH	Graphics	2,264
LIBRY	Library Services	11,485
MEDIA	PRODUCTION SERVICES	4,256
PLANT	Plant Operations	1,403
TELEC	Telecommunications & Network Infrastructure	20
Total		26,417

GRAPHICS - PROPOSED

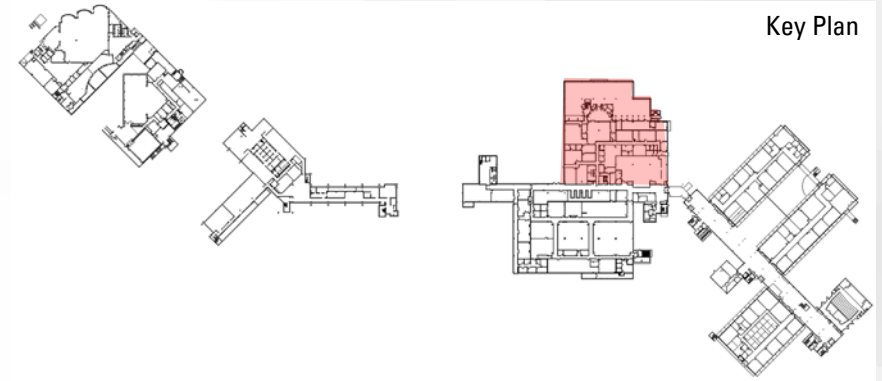
Lower Level - 000



ALL AFFECTED STAFF WILL WORK FROM HOME

FOLLETT - EXISTING

Lower Level - 000



Dept Code	Dept Name	Area
ADF	Adminstration and Finance	4,512
ARHU	School of Arts and Humanities	2,477
GRAPH	Graphics	2,264
LIBRY	Library Services	11,485
MEDIA	PRODUCTION SERVICES	4,256
PLANT	Plant Operations	1,403
TELEC	Telecommunications & Network Infrastructure	20
Total		26,417

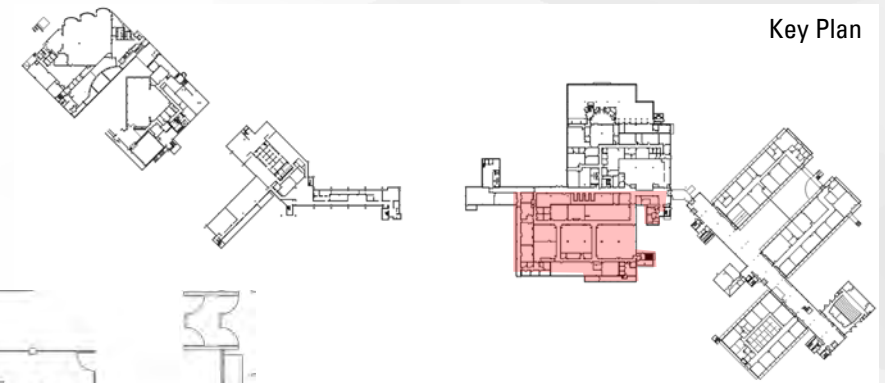
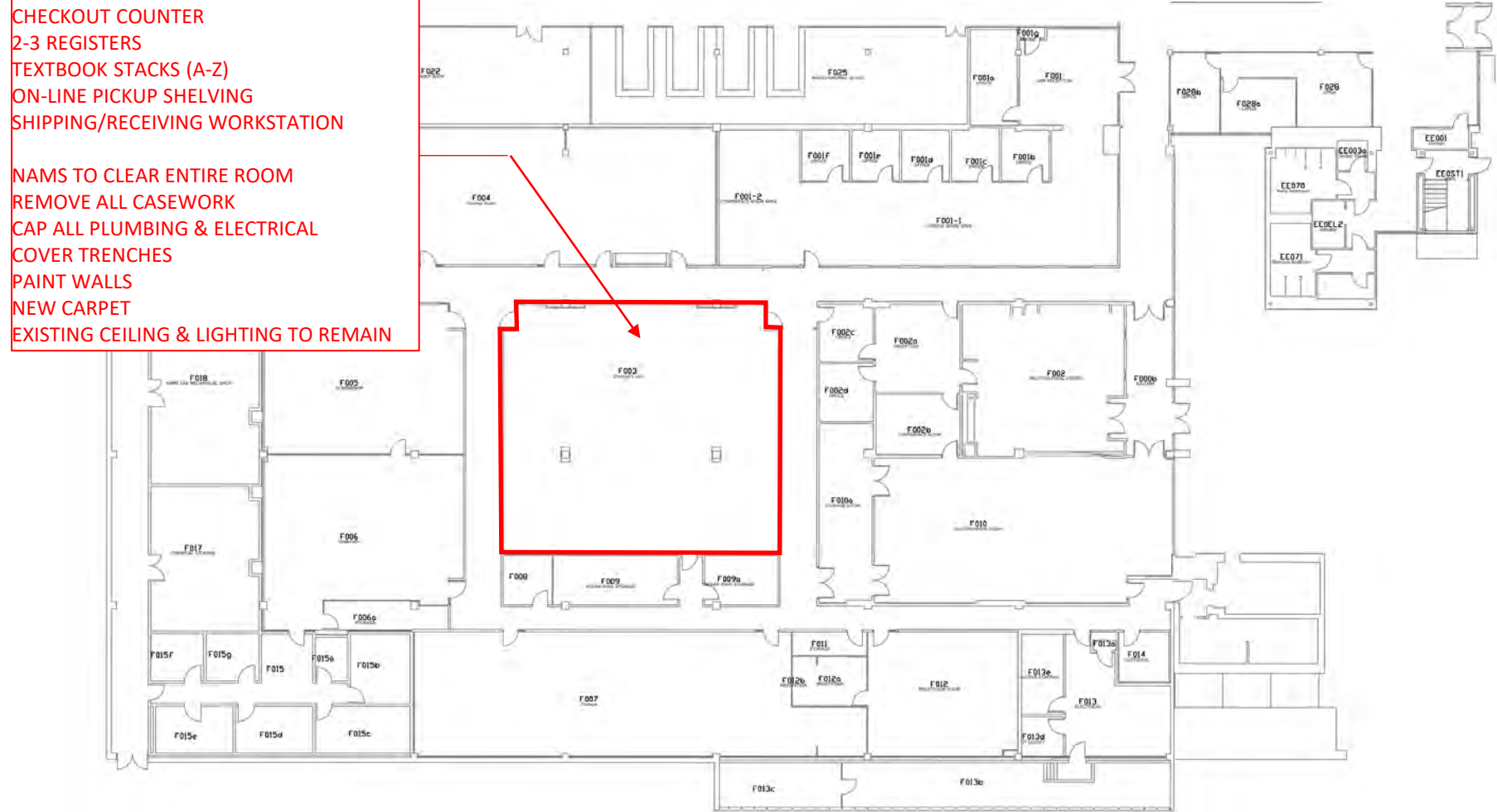
FOLLETT - PROPOSED

Lower Level - 000

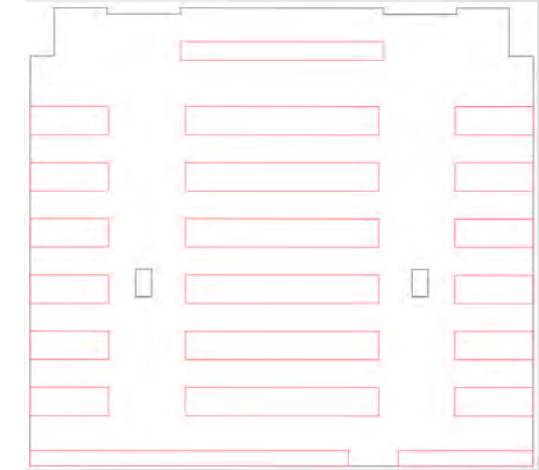
F003 - BOOK DEPOT

- 2-3 STAFF
- CHECKOUT COUNTER
- 2-3 REGISTERS
- TEXTBOOK STACKS (A-Z)
- ON-LINE PICKUP SHELving
- SHIPPING/RECEIVING WORKSTATION

- NAMS TO CLEAR ENTIRE ROOM
- REMOVE ALL CASEWORK
- CAP ALL PLUMBING & ELECTRICAL
- COVER TRENCHES
- PAINT WALLS
- NEW CARPET
- EXISTING CEILING & LIGHTING TO REMAIN



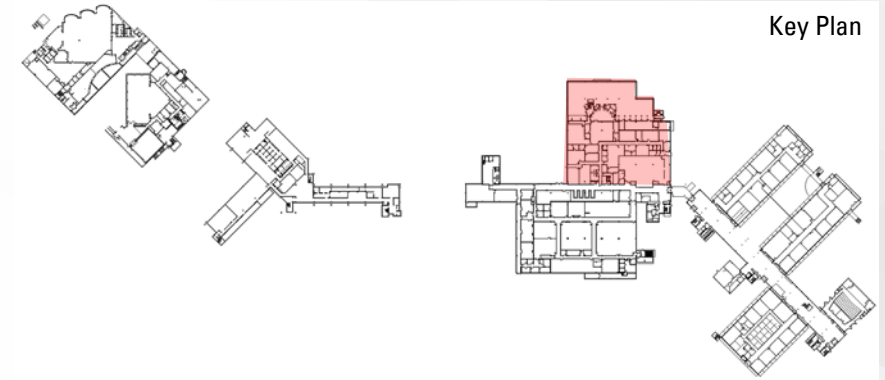
F003 – Stack Layout



350 LF OF RANGE REQUIRED
 504 LF OF RANGE PROVIDED

LIBRARY SERVICES - EXISTING

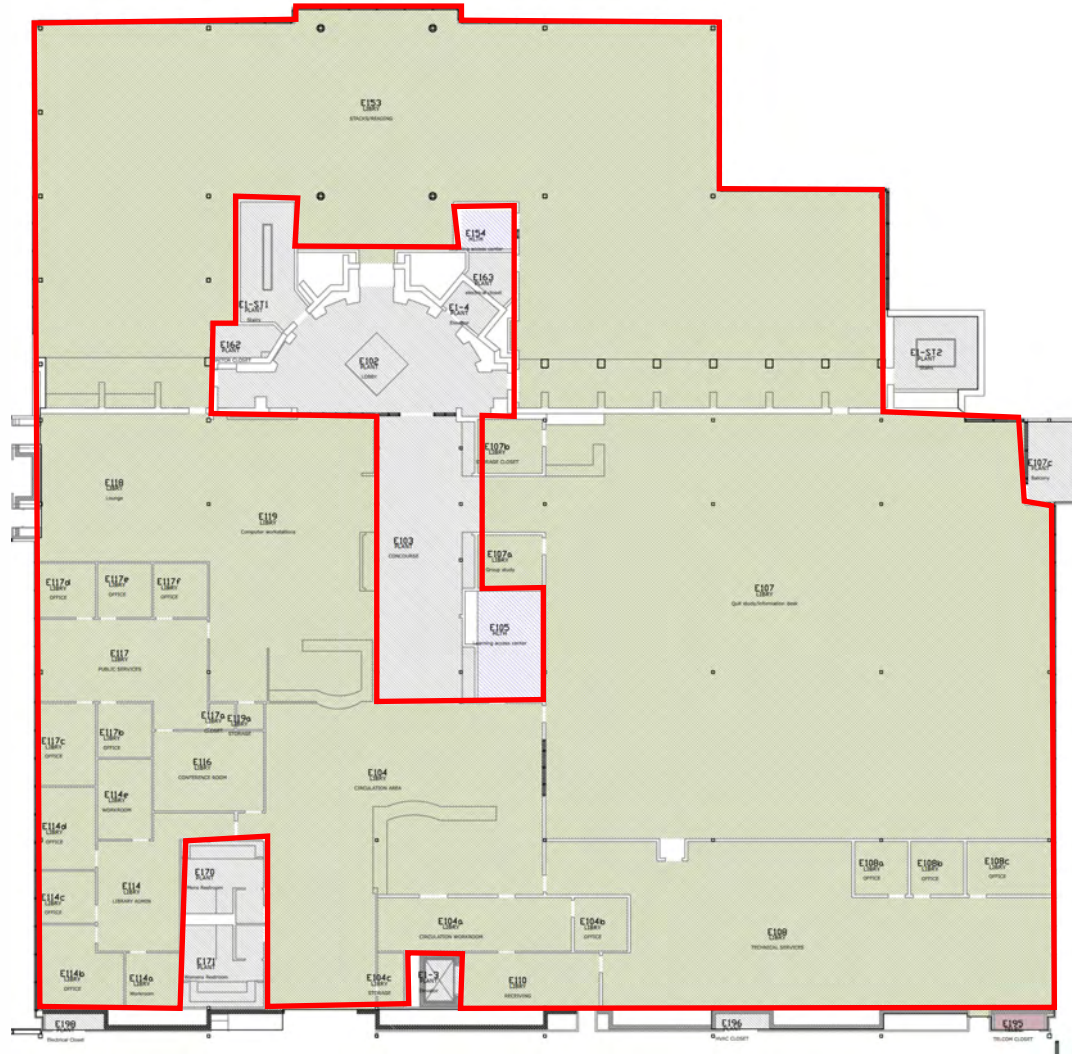
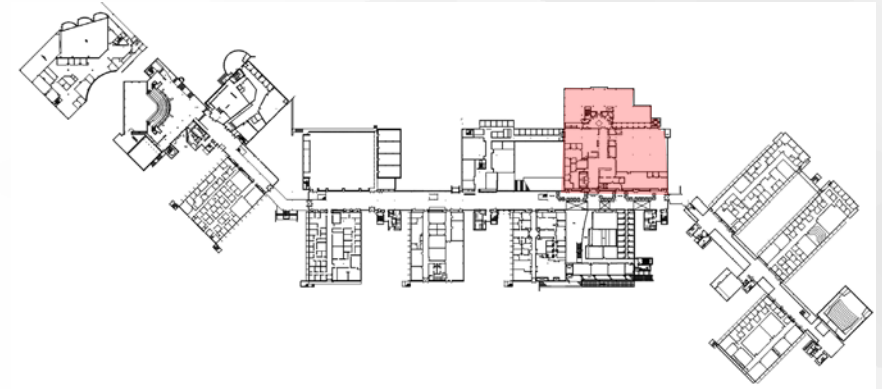
Lower Level - 000



Dept Code	Dept Name	Area
ADF	Administration and Finance	4,512
ARHU	School of Arts and Humanities	2,477
GRAPH	Graphics	2,264
LIBRY	Library Services	11,485
MEDIA	PRODUCTION SERVICES	4,256
PLANT	Plant Operations	1,403
TELEC	Telecommunications & Network Infrastructure	20
Total		26,417

LIBRARY SERVICES - EXISTING

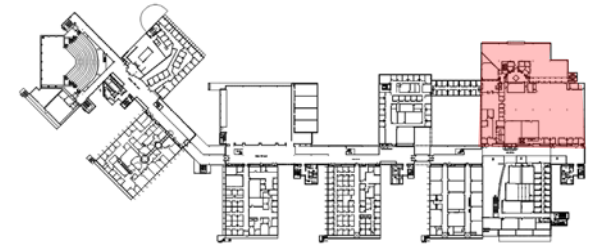
Main Level - 100



Dept Code	Dept Name	Area
HLTH	Health & Wellness	294
LIBRY	Library Services	24,920
PLANT	Plant Operations	2,892
TELEC	Telecommunications & Network Infrastructure	26
Total		28,132

LIBRARY SERVICES - EXISTING

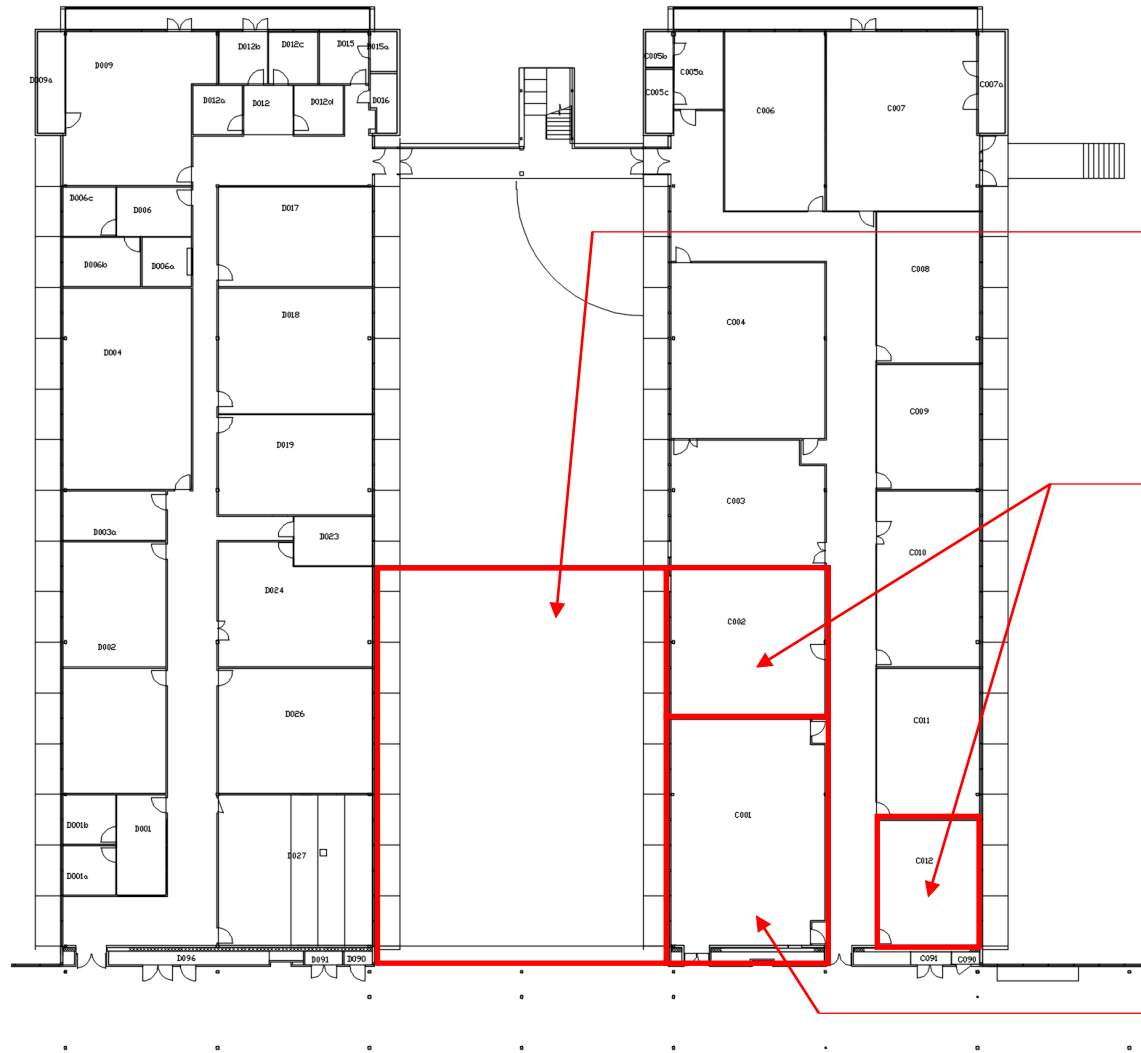
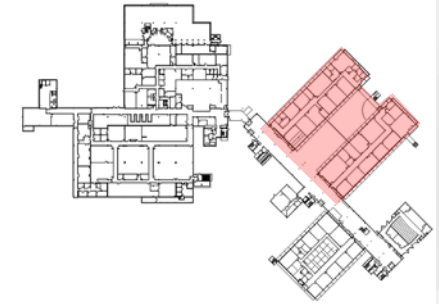
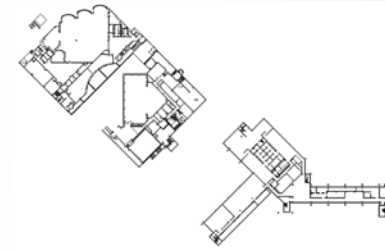
Upper Level - 200



Dept Code	Dept Name	Area
AAF	Academic Affairs	473
BUSN	School of Business	64
GENS	School of General Studies	5,088
LIBRY	Library Services	20,112
NAMS	School of Natural Sciences and Math	201
PLANT	Plant Operations	1,065
SOBL	Social and Behavioral Sciences	90
TELEC	Telecommunications & Network Infrastructure	15
Total		27,108

LIBRARY SERVICES - PROPOSED

Lower Level - 000



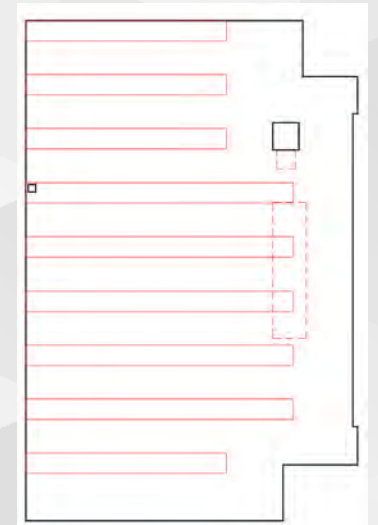
C/D WING ATRIUM - STUDENT FACING SERVICES
3-5 STAFF
CIRCULATION DESK
2 CIRCULATION WORKSTATIONS
LOCKABLE CABINETS FOR RESERVE MATERIAL & I.L.L. PICKUP
PRINTING AND COPY AREA
SEMI-QUIET STUDY SPACE
LIBRARIAN WORKSTATIONS

C002 & C012 - SPECIAL COLLECTIONS
3 STAFF WITH WORKSTATIONS
SCANNING CAPABILITIES
GOV DOCS WITH SPECIAL READER
CLASSROOM FOR TEACHING USE

C001 - 20,000 ACTIVE VOLUMES
CLOSE PROXIMITY TO ATRIUM
LOCKABLE WITH CARD ACCESS

DEMO EXISTING FIXED LAB TABLE
130,000 VOLUMES TO BE STORED OFF SITE BY VENODR

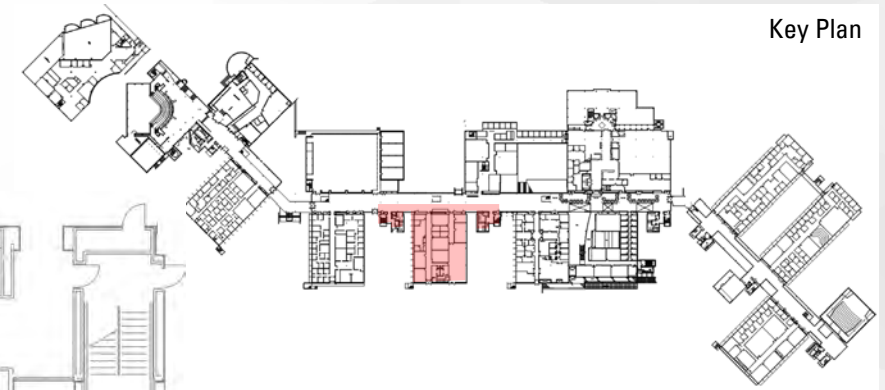
C001 – Stack Layout



168 LF OF RANGE REQUIRED
192 LF OF RANGE PROVIDED

LIBRARY SERVICES - PROPOSED

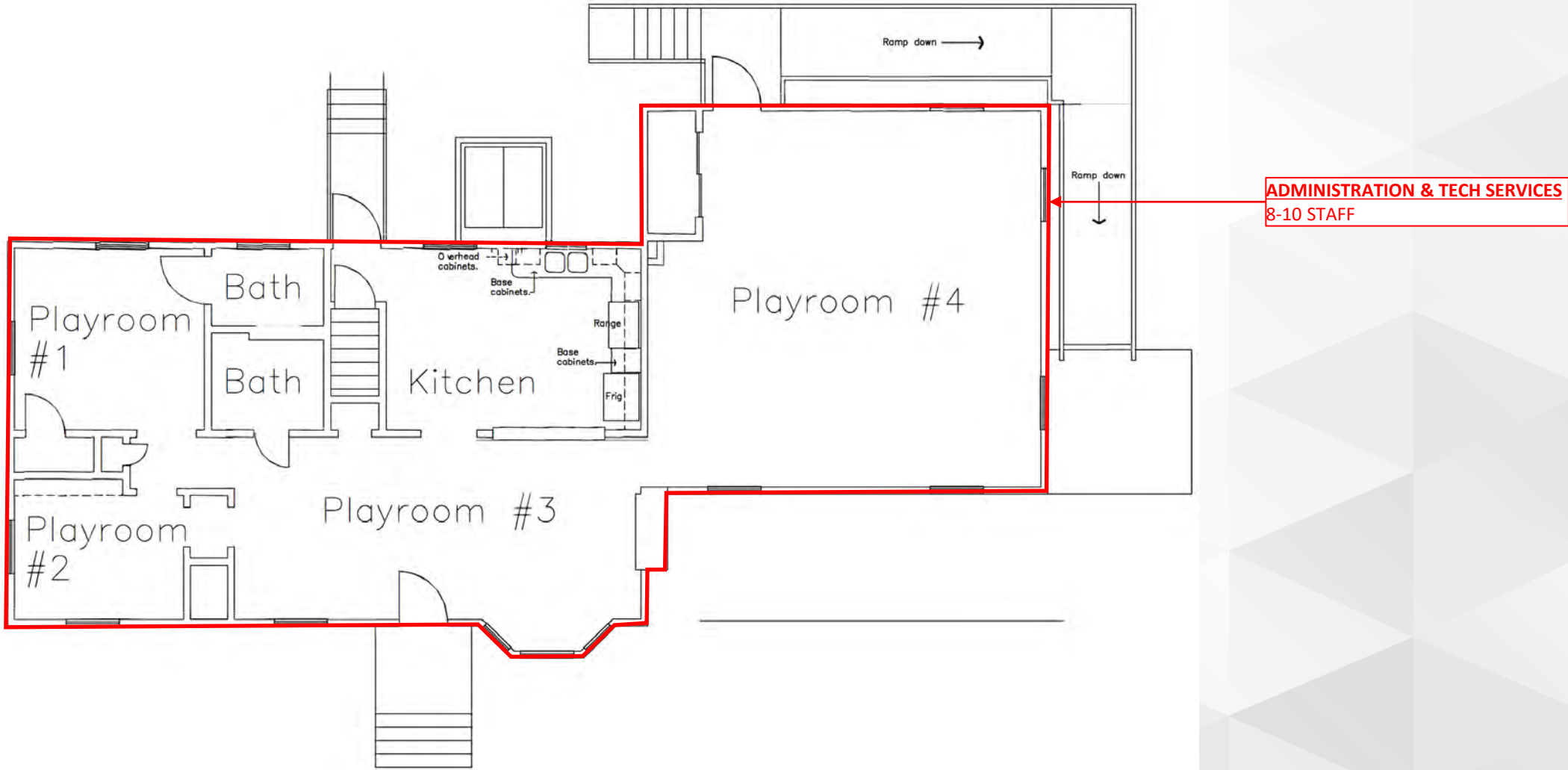
Main Level - 100



H114 - LIBRARIANS
8 STAFF WITH WORKSTATIONS
WILL UTILIZE COURSE CLASSROOMS
DEDICATED CLASSROOM NOT NEEDED

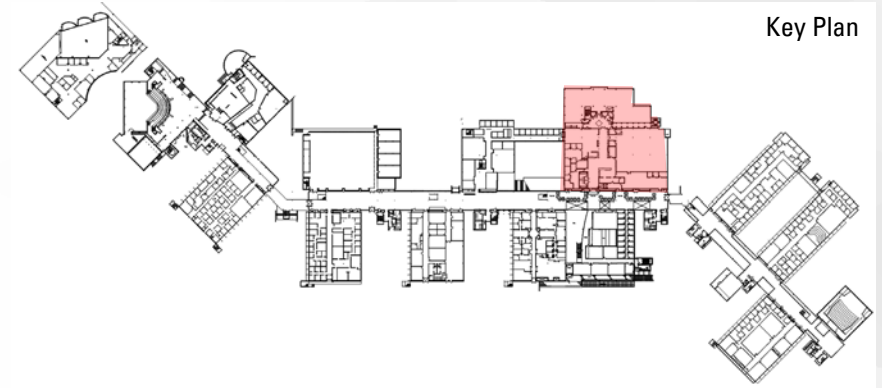
LIBRARY SERVICES - PROPOSED

Main Level - 100



LEARNING ACCESS PROGRAM- EXISTING

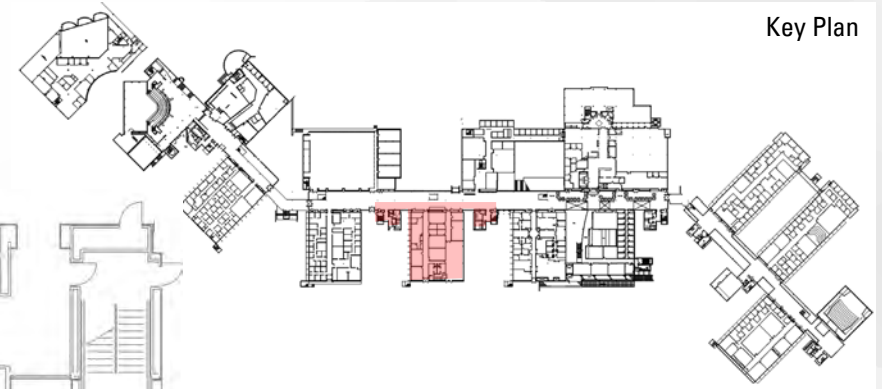
Main Level - 100



Dept Code	Dept Name	Area
HLTH	Health & Wellness	294
LIBRY	Library Services	24,920
PLANT	Plant Operations	2,892
TELEC	Telecommunications & Network Infrastructure	26
Total		28,132

LEARNING ACCESS PROGRAM - PROPOSED

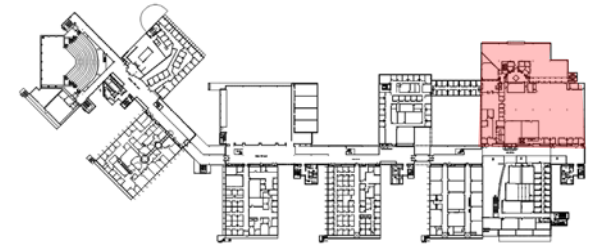
Main Level - 100



H113 - LAP
6 SPECIALTY WORKSTATIONS
ROOM FOR GROWTH AS NEEDED OVER
THE NEXT 2-YEARS

HRC & READING ROOM - EXISTING

Upper Level - 200



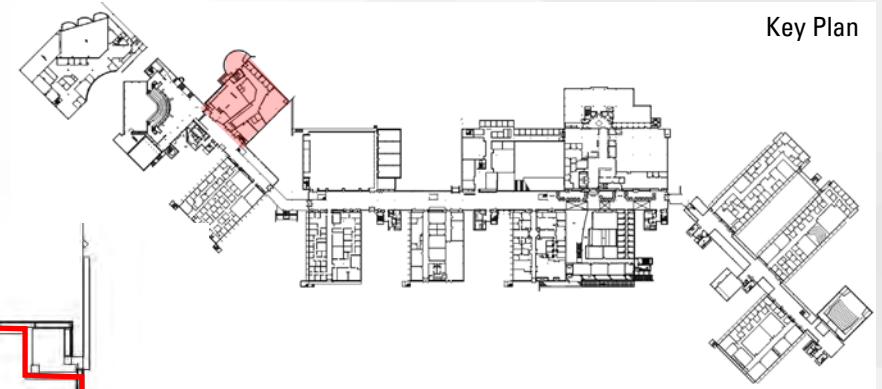
Key Plan



Dept Code	Dept Name	Area
AAF	Academic Affairs	473
BUSN	School of Business	64
GENS	School of General Studies	5,088
LIBRY	Library Services	20,112
NAMS	School of Natural Sciences and Math	201
PLANT	Plant Operations	1,065
SOBL	Social and Behavioral Sciences	90
TELEC	Telecommunications & Network Infrastructure	15
Total		27,108

HRC & READING ROOM - PROPOSED

Main Level - 100

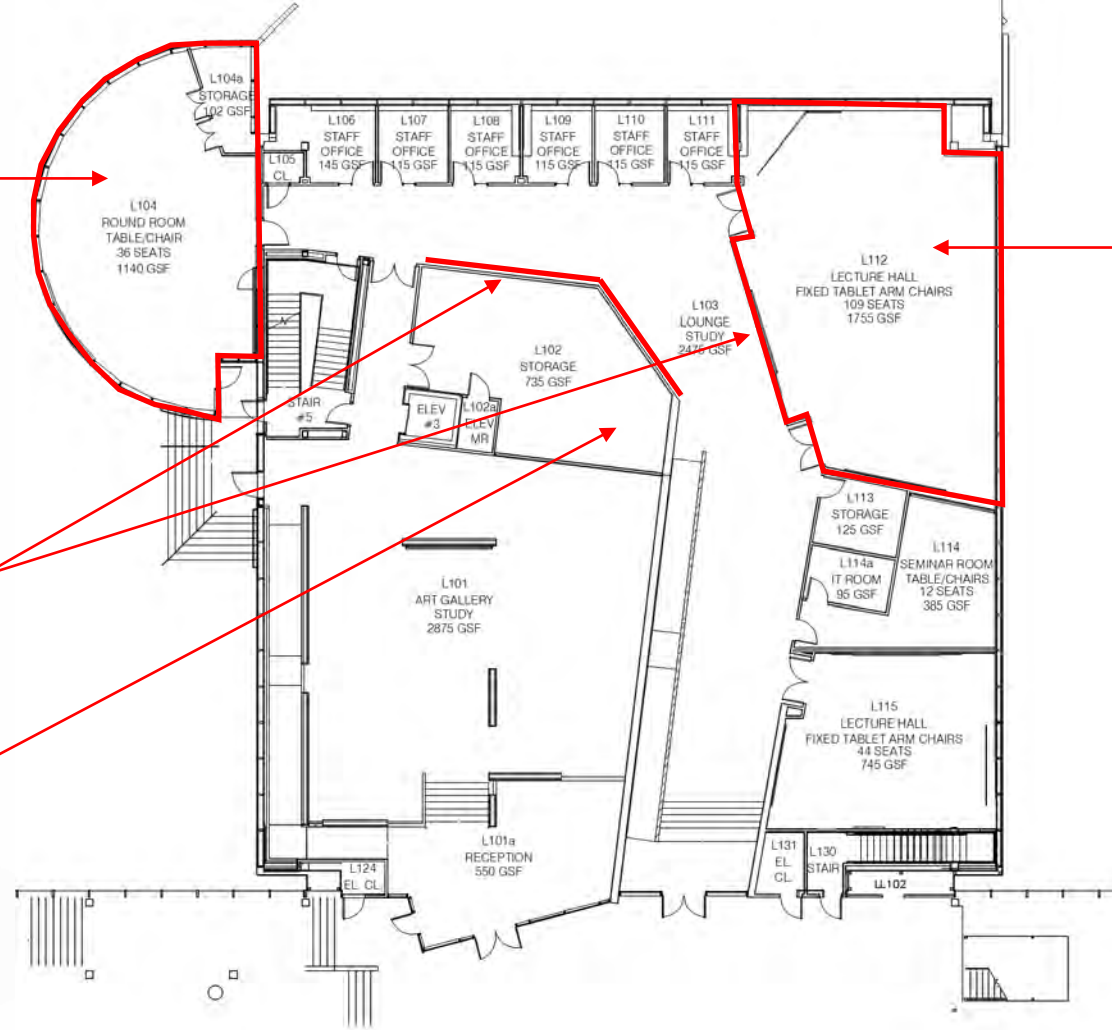


L104 - OFFICE / CLASSROOM
GENERAL OFFICE
(5) WORKSTATIONS
SMALL CLASSROOM
STORAGE ROOM USED FOR LOCKABLE ARTIFACTS

EXHIBIT SPACE
USE BLANK WALLS AS CURATED
EXHIBIT SPACE

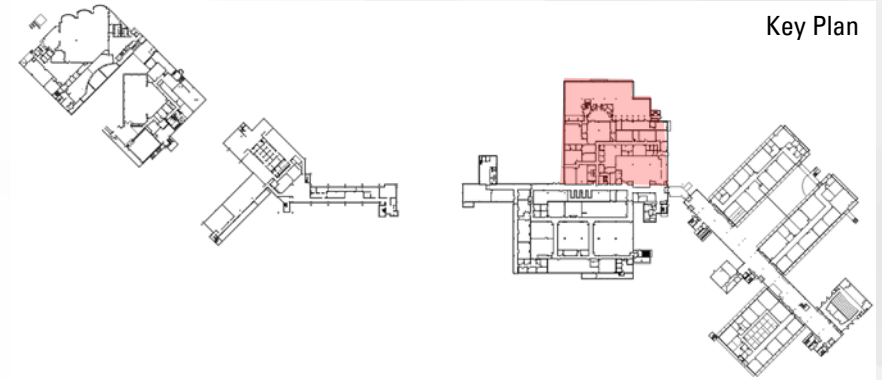
L102 - STORAGE SPACE
POSSIBLE SHARED STORAGE
WITH ART GALLERY

L112 - CLASSROOM
DEDICATED CLASSROOM
EXHIBIT SPACE
DIGITAL DISPLAY



ARHU- EXISTING

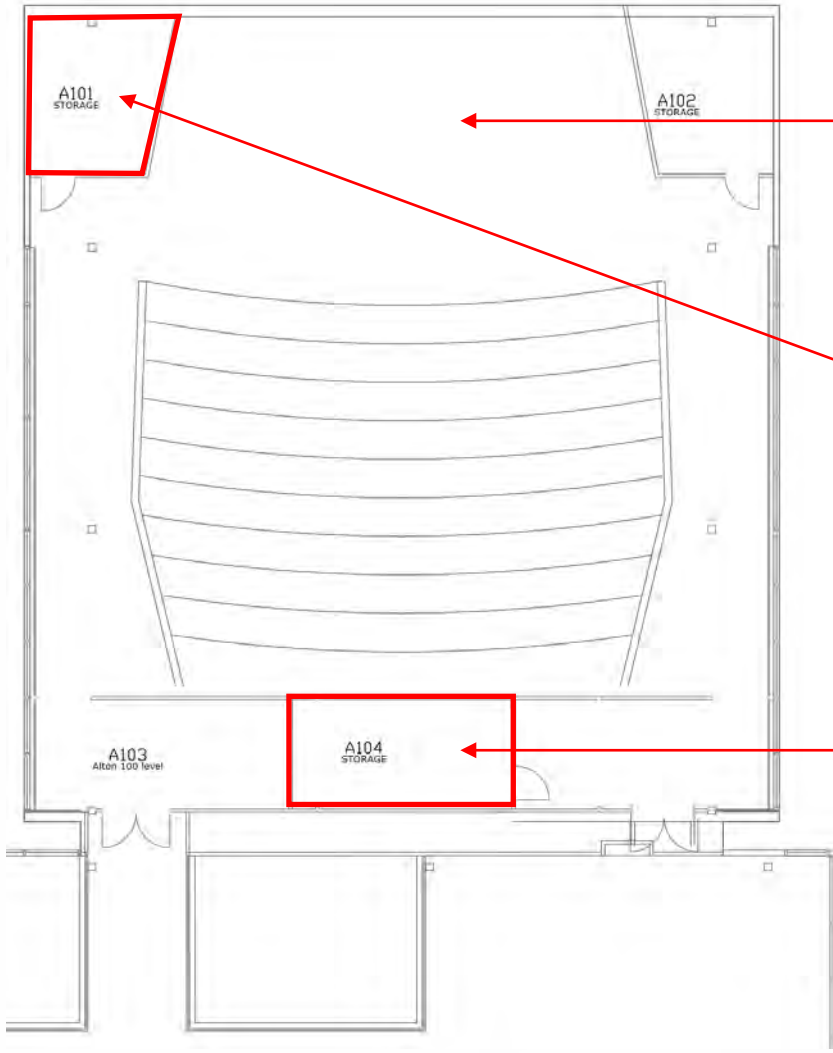
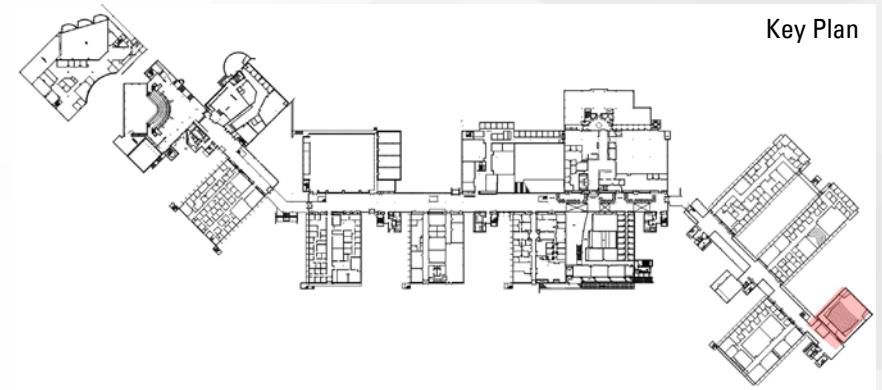
Lower Level - 000



Dept Code	Dept Name	Area
ADF	Administration and Finance	4,512
ARHU	School of Arts and Humanities	2,477
GRAPH	Graphics	2,264
LIBRY	Library Services	11,485
MEDIA	PRODUCTION SERVICES	4,256
PLANT	Plant Operations	1,403
TELEC	Telecommunications & Network Infrastructure	20
Total		26,417

ARHU- PROPOSED

Lower Level – 000 & Main Level - 100



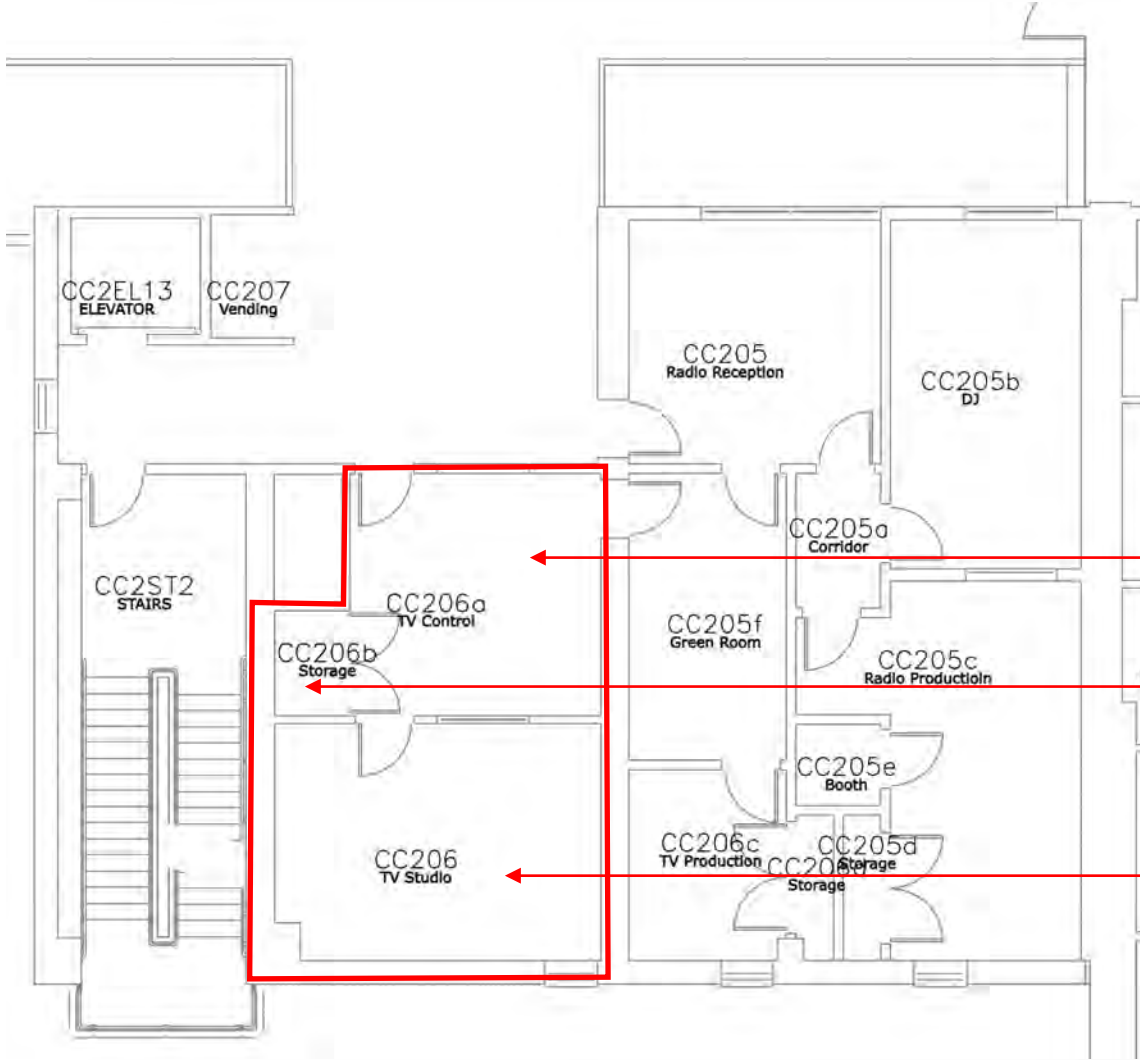
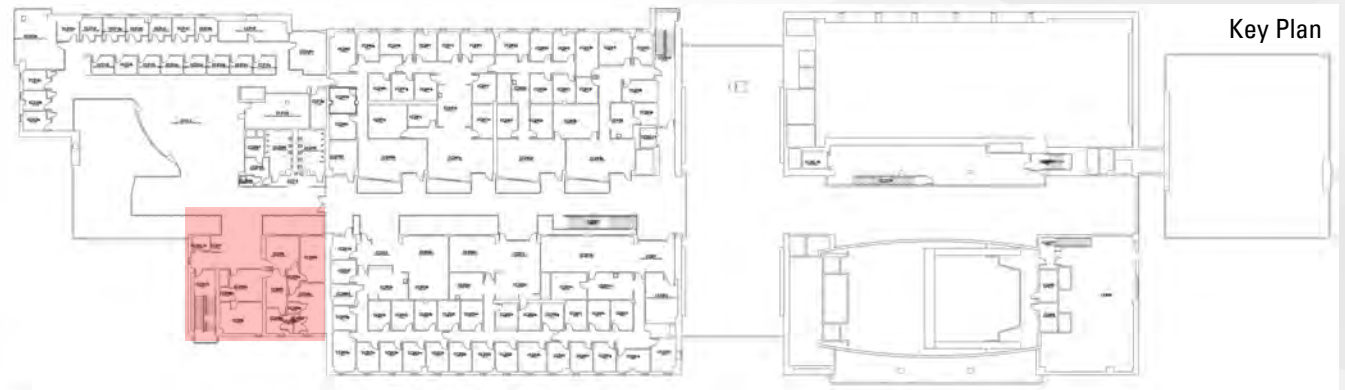
A103 - STAGE
PERMANENTLY INSTALL SET ON STAGE
RELOCATE ARHU CAMERAS AS NEEDED

A101 - STORAGE ROOM
CLEAR OUT STORAGE ROOM
REPURPOSE AS TEMPORARY CONTROL ROOM
RELOCATE ARHU EQUIPMENT AS NEEDED

A104 - CONTROL ROOM
MIGHT BE CONSIDERED AS JOINT
CONTROL ROOM, NEED TO INVESTIGATE

ARHU- PROPOSED

Upper Level – 200



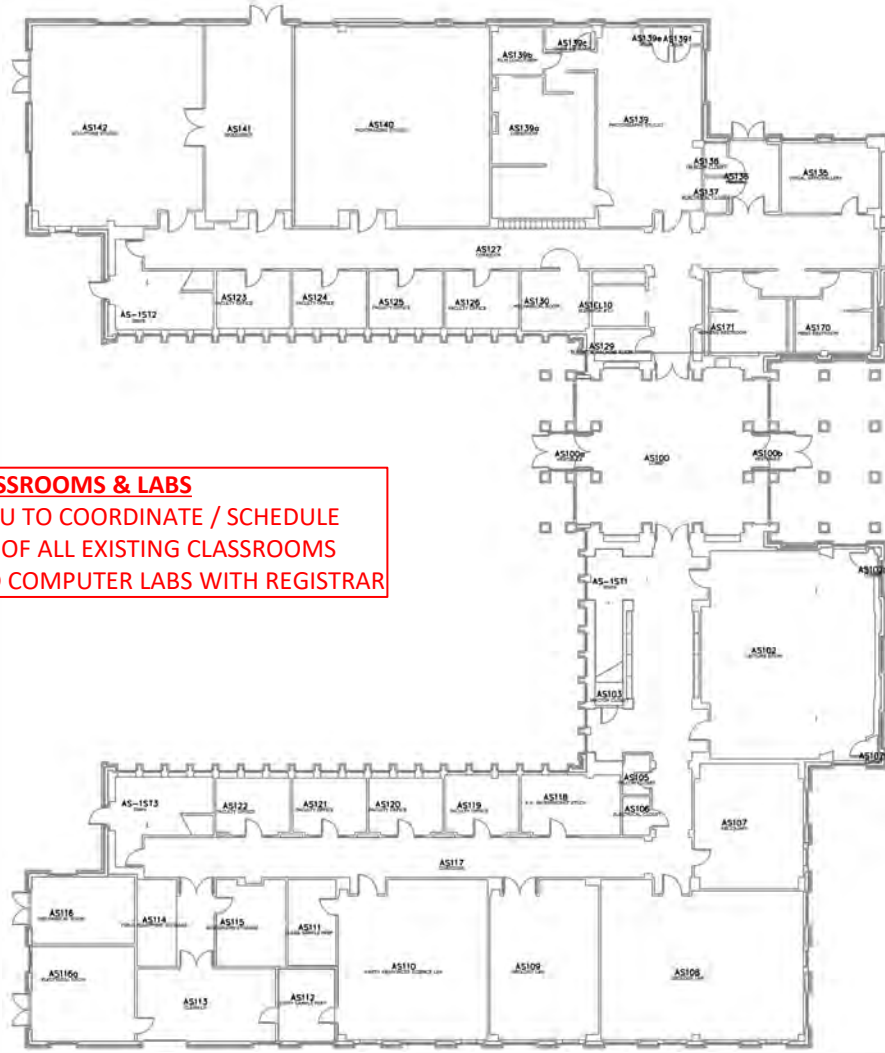
CC206A
OFFICE SPACE
(2) FULL-TIME WORKSTATIONS
(1) STUDENT WORKER DESK

CC206B
EQUIPMENT STORAGE

CC206
EQUIPMENT STORAGE

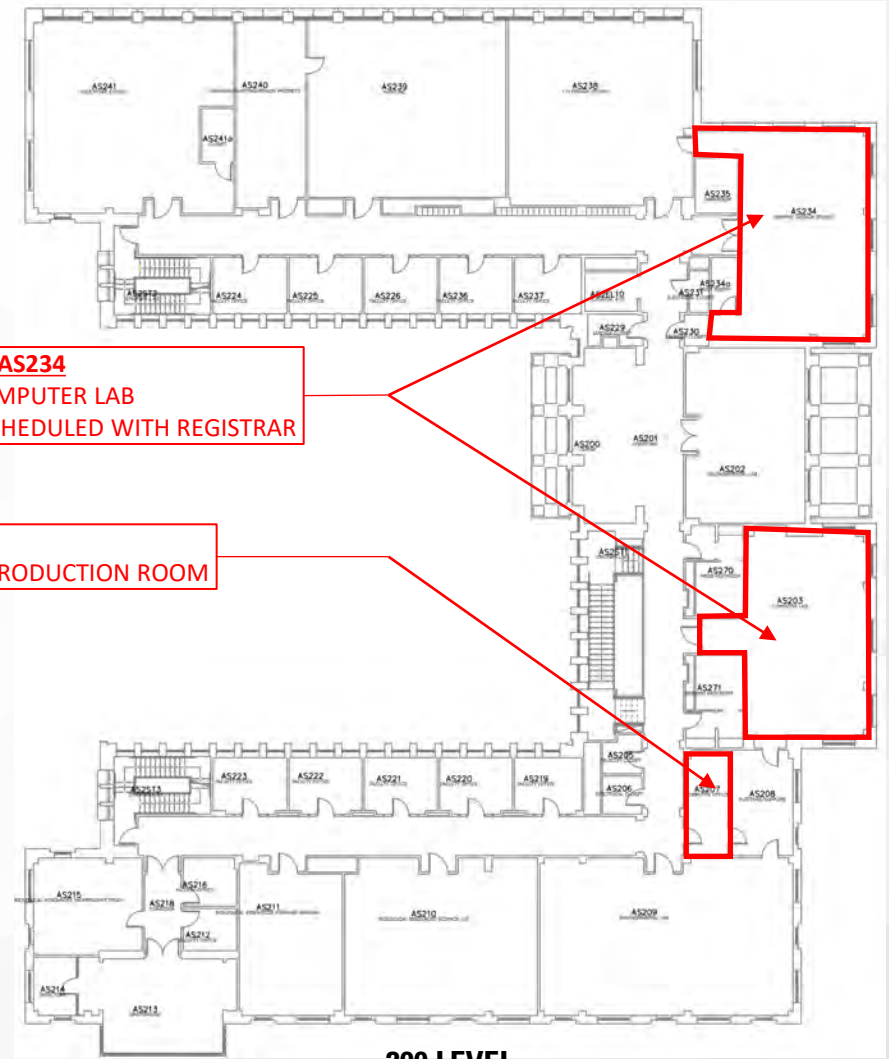
ARHU- PROPOSED

Main Level – 100 and Upper Level - 200



CLASSROOMS & LABS
ARHU TO COORDINATE / SCHEDULE
USE OF ALL EXISTING CLASSROOMS
AND COMPUTER LABS WITH REGISTRAR

100 LEVEL



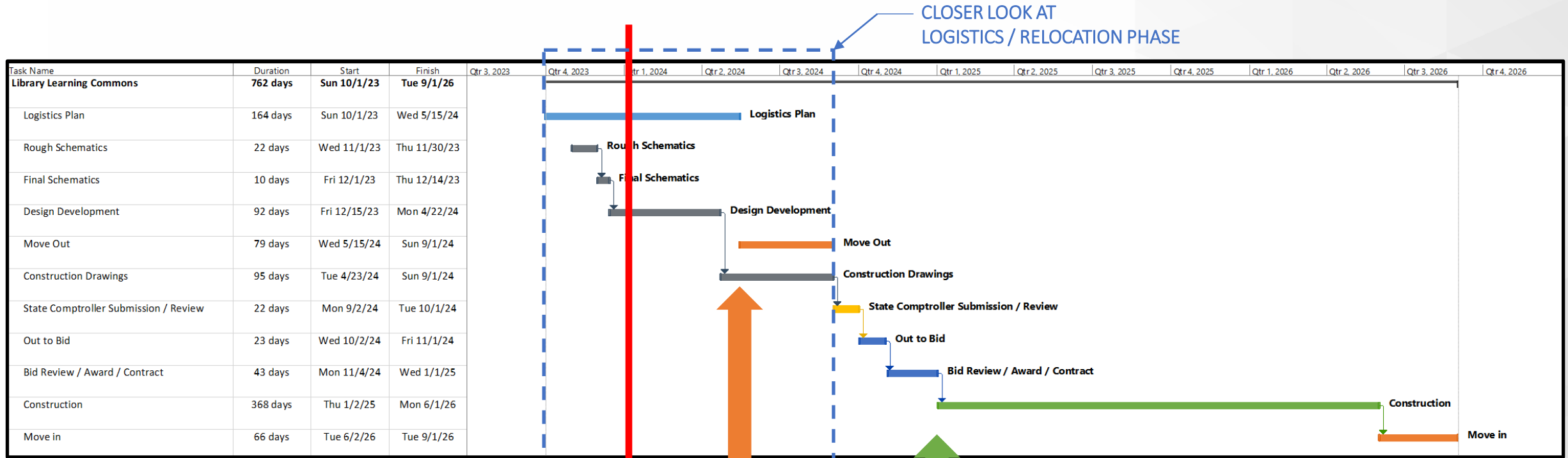
AS203 / AS234
MAC COMPUTER LAB
TO BE SCHEDULED WITH REGISTRAR

AS207
AUDIO PRODUCTION ROOM

200 LEVEL

DESIGN / RELOCATION / CONSTRUCTION

Richard E. Bjork Library, HRC, Special Collections, Research, Multi-media Center, etc.



Task Name	Duration	Start	Finish	Qtr 3, 2023	Qtr 4, 2023	Qtr 1, 2024	Qtr 2, 2024	Qtr 3, 2024	Qtr 4, 2024	Qtr 1, 2025	Qtr 2, 2025	Qtr 3, 2025	Qtr 4, 2025	Qtr 1, 2026	Qtr 2, 2026	Qtr 3, 2026	Qtr 4, 2026
Library Learning Commons	762 days	Sun 10/1/23	Tue 9/1/26														
Logistics Plan	164 days	Sun 10/1/23	Wed 5/15/24														
Rough Schematics	22 days	Wed 11/1/23	Thu 11/30/23														
Final Schematics	10 days	Fri 12/1/23	Thu 12/14/23														
Design Development	92 days	Fri 12/15/23	Mon 4/22/24														
Move Out	79 days	Wed 5/15/24	Sun 9/1/24														
Construction Drawings	95 days	Tue 4/23/24	Sun 9/1/24														
State Comptroller Submission / Review	22 days	Mon 9/2/24	Tue 10/1/24														
Out to Bid	23 days	Wed 10/2/24	Fri 11/1/24														
Bid Review / Award / Contract	43 days	Mon 11/4/24	Wed 1/1/25														
Construction	368 days	Thu 1/2/25	Mon 6/1/26														
Move in	66 days	Tue 6/2/26	Tue 9/1/26														

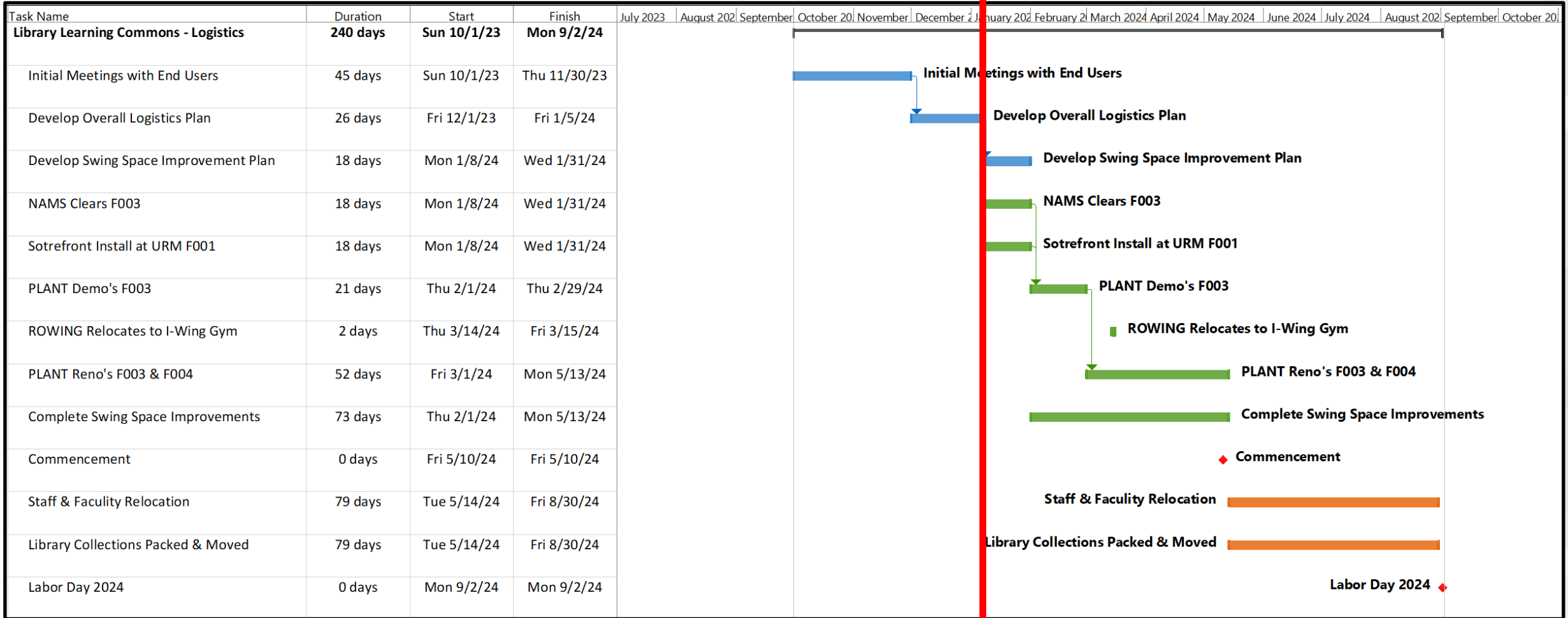
- █ Logistics Phase
- █ Design Phase
- █ Relocation Phase
- █ State Review Phase
- █ Bidding / Contract Phase
- █ Construction Phase

DRAFT

Closer Look at

LOGISTICS / RELOCATION PHASE

Richard E. Bjork Library, HRC, Special Collections, Research, Multi-media Center, etc.



WE ARE
HERE

DRAFT

DRAFT

LIBRARY LEARNING COMMONS

Plans for Renovation to the Academic Spine, E -Wing



~ NEXT STEPS ~
